



JOHN DEERE 9600 MAXIMIZER™ COMBINE WITH 900 SERIES CUTTING PLATFORM

(1989-)

(SPECIFICATIONS AND DESIGN SUBJECT TO CHANGE WITHOUT NOTICE)

Sample Manual Download All 1388 pages at

<https://www.bobmanualstore.com/downloads/john-deere-9600-maximizer-combine-service-repair-parts-manual/>

NOTE

FOR 900 SERIES PLATFORM PARTS INFORMATION, REFER TO JOHN DEERE 900 SERIES PLATFORM PARTS CATALOG - PC-2104.

FOR 40 SERIES CORN HEAD PARTS INFORMATION, REFER TO JOHN DEERE 40 SERIES CORN HEAD PARTS CATALOG - PC-1223.

FOR 50A SERIES ROW-CROP HEAD PARTS INFORMATION, REFER TO JOHN DEERE 50A SERIES ROW-CROP HEAD PARTS CATALOG - PC-1747.

FOR THREE-ROLLER BELT PICKUP PARTS INFORMATION, REFER TO JOHN DEERE THREE-ROLLER BELT PICKUP PARTS CATALOG - PC-2210.

FOR 918 AND 920 DRAPER PARTS INFORMATION, REFER TO JOHN DEERE 918 AND 920 DRAPER PLATFORMS PARTS CATALOG - PC-2212.

FOR 90 SERIES CORN HEAD PARTS INFORMATION, REFER TO JOHN DEERE 90 SERIES CORN HEAD PARTS CATALOG - PC-2404.

IMPORTANT

THIS PARTS CATALOG CONTAINS PARTS INFORMATION FOR THE 9600 MAXIMIZER™ COMBINE. VINTAGE IS DETERMINED BY THE COMBINE SERIAL NUMBER OR THE PRODUCT IDENTIFICATION NUMBER (PIN). IT IS IMPORTANT THAT THE CORRECT NUMBERS BE USED WHEN ORDERING PARTS.

Sample manual. Download All 1388 pages at:

<https://www.bobmanualstore.com/downloads/john-deere-9600-maximizer-combine-service-repair-parts-manual/>

PRODUCT INFORMATION NUMBER (PIN) PLATE

THE PRODUCT IDENTIFICATION PLATE (PIN) IS LOCATED NEAR THE RIGHT-HAND SIDE OF THE TOOL BOX.
AN EXAMPLE OF THE TWO-LINES ON THIS PIN PLATE IS:

HO9600X640301
COMBINE

(FIRST LINE)

HO - MANUFACTURING UNIT (HARVESTER WORKS)

9600 - MODEL IDENTIFIER

X - CONFIGURATION CODE/MODEL IDENTIFIER SUFFIX

640301 - SEQUENTIAL NUMBER USED IN SERIAL NO. COLUMN

(SECOND LINE)

COMBINE - TYPE OF PRODUCT

COPYRIGHT (C) 2000. DEERE & COMPANY. MOLINE, ILLINOIS. ALL RIGHTS RESERVED.

THE ENGINE SERIAL NUMBER IS LOCATED ON THE RIGHT-HAND SIDE OF THE ENGINE BLOCK.

9600 STANDARD ENGINE 190 HP

HP4064 -UN-01JAN94

HP4064 1 2 3 4 5 6 7
 ┆ ┆ ┆ ┆ ┆ ┆ ┆
 ┆ 6 ┆ ┆ 076 ┆ ┆ T ┆ ┆ H ┆ ┆ 001 ┆ ┆ 111337 ┆ ┆ RG ┆

1. NUMBER OF CYLINDERS -6-
2. LITRE DISPLACEMENT -076-
3. TYPE OF AIR INTAKE -T-
4. FACTORY USER -H- HARVESTER
5. ENGINE VERSION (FIRST) -001-
6. ENGINE SERIAL NUMBER -113337-
7. ENGINE MANUFACTURER -RG- JOHN DEERE ENGINE WORKS

9600 OPTIONAL ENGINE 253 HP

HP4065 -UN-01JAN94

HP4065 1 2 3 4 5 6 7
 ┆ ┆ ┆ ┆ ┆ ┆ ┆
 ┆ 6 ┆ ┆ 076 ┆ ┆ H ┆ ┆ H ┆ ┆ 001 ┆ ┆ 111839 ┆ ┆ RG ┆

1. NUMBER OF CYLINDERS -6-
2. LITRE DISPLACEMENT -076-
3. TYPE OF AIR INTAKE -H- TURBO / AIR TO AIR AFTER COOLED
4. FACTORY USER -H- HARVESTER
5. ENGINE VERSION (FIRST) -001-
6. ENGINE SERIAL NUMBER -111839-
7. ENGINE MANUFACTURER -RG- JOHN DEERE ENGINE WORKS

PARTS LISTING INFORMATION

SERIAL NUMBER OR PRODUCT IDENTIFICATION NUMBER (PIN) INFORMATION SHOWS ON WHICH MACHINES PART MAY BE USED; FOR EXAMPLE:

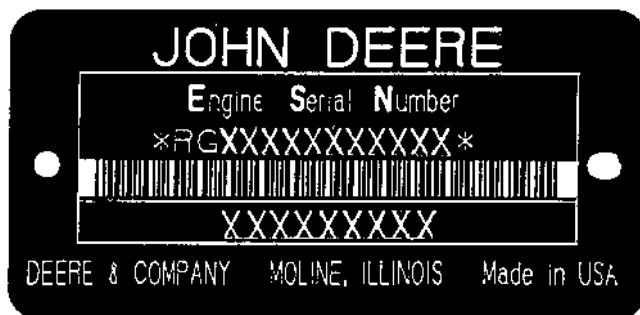
- THE PART CAN BE USED ON ALL MACHINES.
- 000000 THE PART CAN BE USED ON ALL MACHINES UP TO AND INCLUDING THE SERIAL NUMBER LISTED.
- 000000- THE PART CAN BE USED ON ALL MACHINES BEGINNING WITH THE SERIAL NUMBER LISTED.
- 000000-000000 THE PART CAN BE USED ON ALL MACHINES BETWEEN AND INCLUDING SERIAL NUMBERS LISTED.

WHEN XXXXXX'S ARE LISTED IN PLACE OF A SERIAL NUMBER, A SERIAL NUMBER CHANGE WAS MADE, BUT THE EXACT SERIAL NUMBER WAS NOT AVAILABLE WHEN THE CATALOG WAS PRINTED.

SHORT BLOCK SERIAL NUMBER PLATE

(-RGSB076882500)

RGP3513 -UN-01JAN94



RGP3513

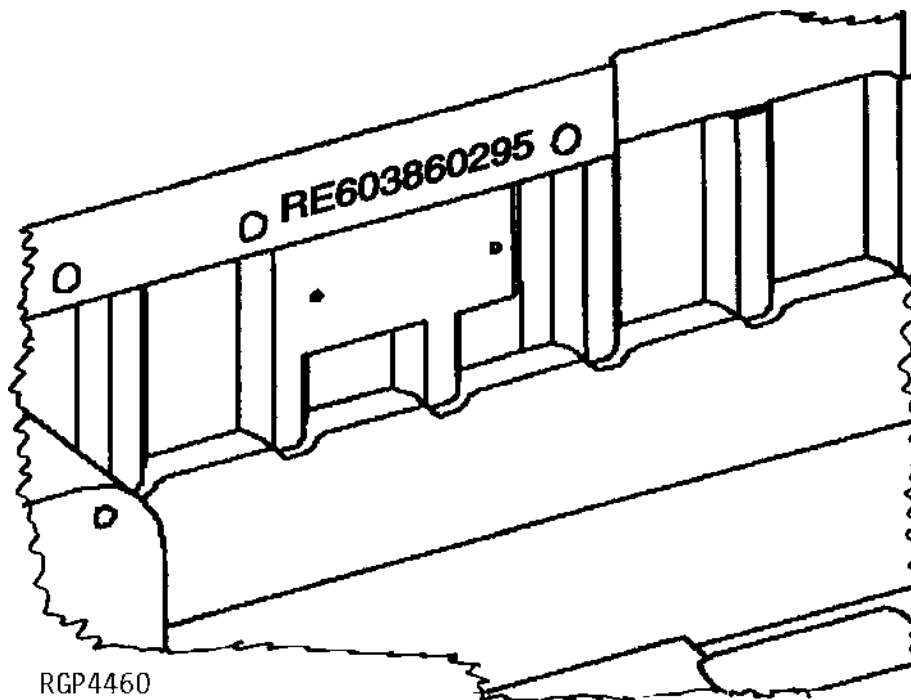
THE REPLACEMENT SHORT BLOCK ASSEMBLY HAS A SERIAL NUMBER PLATE ATTACHED. THE ORIGINAL ENGINE SERIAL NUMBER MUST BE STAMPED ONTO THE NEW PLATE IN THE BLANK SPACE PROVIDED, AS A REFERENCE FOR YOUR DEALER. THE PLATE CAN BE ATTACHED WITH (2) 37H44 DRIVE SCREWS.

- | | |
|---------------------------------------|----------------------------|
| 1. DESIGNATES ENGINE MANUFACTURER | RG - WATERLOO ENGINE WORKS |
| 2. DESIGNATES REPLACEMENT SHORT BLOCK | SB |
| 3. DESIGNATES LITERS | XXX- 076 (7.6) |
| 4. DESIGNATES THE PRODUCTION DATE | 8825 |
| 5. DESIGNATES COMPONENT SEQUENCE | 00 |

SHORT BLOCK SERIAL NUMBER IDENTIFICATION

(RE603860295-)

RGP4460 -UN-04MAR95



SERIAL NUMBER STAMPED INTO CASTING OF BLOCK NEAR PREVIOUS SERIAL NUMBER PLATE.

EXAMPLE: RE603860295

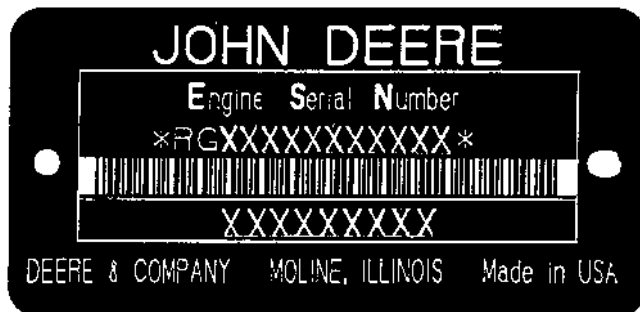
- | | |
|-----------------------------------|---------|
| 1. DESIGNATES SERVICE PART NUMBER | RE60386 |
| 2. DESIGNATES MONTH ASSEMBLED | 02 |
| 3. DESIGNATES YEAR ASSEMBLED | 95 |

1A8

9600 MAXIMIZER COMBINE

TWO LINE BAR CODED ENGINE SERIAL NUMBER PLATE AND ADDITIONAL ENGINE INFORMATION (LOCATED ON FUEL INJECTION PUMP SIDE OF ENGINE)

RGP3513 -UN-01JAN94



RGP3513

FIRST LINE

DEFINES

RG - WATERLOO ENGINE WORKS

DESIGNATES ENGINE MANUFACTURER.

6

DESIGNATES NUMBER OF CYLINDERS.

076 (7.6 LITERS)

DESIGNATES LITER DISPLACEMENT.

T - TURBOCHARGED

OR

H - AIR-TO-AIR

XXXXXX

DESIGNATES ENGINE SERIAL NUMBER.

SECOND LINE

6076XXXXX

DESIGNATES ENGINE APPLICATION

ADDITIONAL ENGINE INFORMATION

ENGINE MODEL	ENGINE SERIAL NO.	APPLICATION
6076HH030 (260 H.P.)	(500000-565536)	(9600 OPT ENGINE) (DOMESTIC)
6076HH030 (260 H.P.)	(565537-)	(9600 OPT ENGINE) (EXPORT ONLY)
6076HH034 (260 H.P.)	(565537-)	(9600 OPT ENGINE) (DOMESTIC)
6076HH035 (218 H.P.)	(565943-)	(9600 STD ENGINE)

DIRECTION ARROW

ARROWS ARE USED WITH ILLUSTRATIONS TO INDICATE THE FRONT OF THE UNIT. "RIGHT-HAND" AND "LEFT-HAND" SIDES ARE DETERMINED BY FACING IN THE DIRECTION OF MACHINE FORWARD TRAVEL.

BOX-ENCLOSED ILLUSTRATIONS

A KEY NUMBER, SHOWN IN THE PARTS LIST, IS ASSIGNED TO A BOX ENCLOSING ALL PARTS SOLD AS A SERVICE ASSEMBLY. A BOX NOT KEYED INCLUDES NON-CURRENT PARTS.

KITS

KIT INFORMATION WILL BE FOUND IMMEDIATELY FOLLOWING THE STORY IN WHICH IT IS USED. THE ILLUSTRATION IS REPEATED WITH ONLY THE KIT PARTS CALLED OUT AND WITH ALL OTHER PARTS SHOWN IN PHANTOM.

JDM REMANUFACTURED COMPONENTS

THE SERVICE PARTS LISTED IN THIS CATALOG ARE INTENDED FOR THE REPAIR OF ORIGINAL EQUIPMENT COMPONENTS. ALTHOUGH MOST SERVICE PARTS MAY BE USED TO REPAIR REMANUFACTURED COMPONENTS, THE REMANUFACTURED DESIGN MAY CHANGE PARTS SUFFICIENTLY SO THAT SERVICE PARTS ARE INADEQUATE OR NOT USABLE.

BOLT AND CAP SCREW STRENGTH IDENTIFICATION

BOLTS AND CAP SCREWS REQUIRED TO HAVE HIGH-STRENGTH QUALITIES EQUIVALENT TO SAE GRADE 8 ARE IDENTIFIED THROUGHOUT THIS CATALOG BY THE DESCRIPTION HS SAE 8. ALL STANDARD BOLTS AND CAP SCREWS ARE SAE GRADE 5 OR LOWER. BOLTS AND CAP SCREWS REQUIRED TO HAVE HIGH-STRENGTH QUALITIES EQUIVALENT TO PROPERTY CLASS 10.9 ARE IDENTIFIED THROUGHOUT THIS CATALOG BY HS 10.9. ALL STANDARD BOLTS AND CAP SCREWS ARE PROPERTY CLASS 8.8 OR LOWER.

SI UNITS OF MEASURE

METRIC DIMENSIONS ARE GIVEN, WHERE APPLICABLE, THROUGHOUT THIS PARTS CATALOG.

TRADEMARKS

THROUGHOUT THIS PARTS CATALOG, YOU WILL FIND THE FOLLOWING DEERE & COMPANY TRADEMARKS:

DIAL-A-SPEED™
DIAL-A-MATIC™
HARVESTRAK™
CONTOUR MASTER™

POSI-TORQ™
TORQ-GARD SUPREME®
QUIK-TATCH™

CHANGE INDICATOR LINE

CHANGES AFFECTING THE ORDERING OF PARTS ARE IDENTIFIED BY VERTICAL LINES MARKED IN THE LEFT-HAND MARGIN OF REVISED PARTS LISTING IMAGES. A LINE IS ALSO AT THE LEFT-HAND EDGE OF THE SAME PART NUMBER IN THE NUMERICAL INDEX TO SHOW THE LOCATION OF REVISED INFORMATION.

FUNCTION CODE (EXAMPLE - FC: 5000)

FUNCTION CODES ARE LOCATED ON EACH PAGE IN THE UPPER RIGHT-HAND CORNER IN THE BOX. THE CODE LISTED IS A GROUPING CODE THAT CAN BE USED FOR WARRANTIES AND FOR DTAC TO IDENTIFY CERTAIN AREAS.

COMPLETE GOODS LISTINGS

COMPLETE GOODS ARE IN BOLD FACE TYPE. ORDER SEPARATELY. DO NOT INCLUDE ON REPLACEMENT PARTS ORDER.

FOR INDIVIDUAL HEADER PARTS CATALOGS REFER TO:

PC-2104 - PARTS CATALOG FOR JOHN DEERE 900 SERIES PLATFORMS

PC-2210 - PARTS CATALOG FOR JOHN DEERE THREE ROLLER BELT PICK-UP

PC-2212 - PARTS CATALOG FOR JOHN DEERE 918 AND 920 DRAPER PLATFORMS

PC-1747 - PARTS CATALOG FOR JOHN DEERE 50A SERIES ROW-CROP HEADS

PC-1223 - PARTS CATALOG FOR JOHN DEERE 40 SERIES CORN HEADS

PC-2404 - PARTS CATALOG FOR JOHN DEERE 90 SERIES CORN HEADS

SECTION INDEX

- SECTION 10 - GENERAL INFORMATION
- SECTION 20 - ENGINE FAN, INTERCOOLER AND SCREENS
- SECTION 25 - 6076 ENGINE (SERIAL NUMBER -499999)
- SECTION 26 - 6076 ENGINE (SERIAL NUMBER 500000-)
- SECTION 30 - FUEL AND AIR
- SECTION 40 - ELECTRICAL
- SECTION 50 - POWER TRAIN
- SECTION 60 - STEERING AND BRAKES
- SECTION 70 - HYDRAULICS
- SECTION 80 - SEPARATOR SHELL
- SECTION 90 - OPERATOR'S STATION
- SECTION 110 - FEEDER HOUSE
- SECTION 120 - THRESHING AND SEPARATION
- SECTION 121 - DRIVES
- SECTION 125 - RESIDUE DISPOSAL
- SECTION 130 - CLEAN GRAIN ELEVATOR, GRAIN TANK AND UNLOADING AUGER
- SECTION 160 - DIAL-A-MATIC HEADER HEIGHT CONTROL
- SECTION 170 - DECALS, BELTS AND CHAINS
- SECTION 180 - NUMERICAL INDEX

ALPHABETICAL INDEX

GRID		PAGE	GRID		PAGE
	A				
6F10	A/C COMPRESSOR HARDWARE (650301-) R134A.....	90 - 94	6E1	AIR SEAT SUSPENSION KITS (665301-).....	90 - 58
1C15	A/C CONDENSER, AIR INTER COOLER AND RADIATOR WITH OIL COOLER	20 - 22	6E3	AIR SEAT SUSPENSION KITS (665301-).....	90 - 60
3E3	A/C HIGH PRESSURE SWITCH, 6076	40 - 60	3C17	AIR SEAT WIRING HARNESS (660301-)	40 - 24
5D16	ACCUMULATOR AND MOUNTING, ONE GALLON (655301-)	70 - 46	6D21	AIR SUSPENSION KITS, SEAT (665301-)	90 - 54
5B21	ACCUMULATOR PRESSURE GAUGE WIRING HARNESS	70 - 2	6D23	AIR SUSPENSION KITS, SEAT (665301-)	90 - 56
5D14	ACCUMULATOR, DUAL, HALF GALLON.....	70 - 44	6E1	AIR SUSPENSION KITS, SEAT (665301-)	90 - 58
5D12	ACCUMULATOR, SINGLE MOUNTING BRACKET ONE HALF GALLON	70 - 42	6E3	AIR SUSPENSION KITS, SEAT (665301-)	90 - 60
5D12	ACCUMULATOR, SINGLE, ONE HALF GALLON	70 - 42	6D19	AIR SUSPENSION, SEAT (660301-).....	90 - 52
4G13	ACTUATOR, PARK BRAKE (-640300)	60 - 2	2F15	ALTERNATOR ADJUSTING STRAP.....	26 - 94
3D11	ADAPTER, WIRING HARNESS (CONTOUR MASTER)	40 - 44	1H6	ALTERNATOR ADJUSTING STRAP (6076) (EARLY DESIGN)	25 - 106
3D13	ADAPTER, WIRING HARNESS (CONTOUR MASTER)	40 - 46	3E19	ALTERNATOR AND SHEAVE (-636603).....	40 - 76
4I6	ADJUSTABLE REAR AXLE.....	60 - 43	3E23	ALTERNATOR MOUNTING.....	40 - 80
4I12	ADJUSTABLE REAR AXLE STEERING TIE RODS	60 - 49	2F15	ALTERNATOR SUPPORT STRAP	26 - 94
6D15	ADJUSTER, OPERATOR'S SEAT LEVER	90 - 48	1H6	ALTERNATOR SUPPORT STRAP (6076) (EARLY DESIGN)	25 - 106
8D11	ADJUSTING BRACKET, CYLINDER DRIVE, DUAL-RANGE	121 - 42	3E20	ALTERNATOR, SHEAVE AND BELT	40 - 77
6E7	ADJUSTING MECHANISM, ARMREST, R.H. (-640300).....	90 - 64	3E17	ALTERNATOR, VOLTAGE REGULATOR (90 AMP) MOTOROLA-PRESTOLITE (-636603)	40 - 74
6E9	ADJUSTING MECHANISM, ARMREST, R.H. (640301-)	90 - 66	3E21	ALTERNATOR, VOLTAGE REGULATOR (95 AMP) BOSCH (636604-)	40 - 78
3F1	ADJUSTING MOTOR, CONCAVE.....	40 - 82	3D5	ANTENNA, SPEAKERS AND RADIO	40 - 38
3E15	ADJUSTING MOTOR, SEPARATOR FAN DRIVE	40 - 72	8D3	ARM, LOCKOUT, DUAL-RANGE	121 - 34
2G3	AIR CLEANER AND INTAKE TUBES (-645300)	30 - 12	2C22	ARM, ROCKER	26 - 26
2G5	AIR CLEANER AND INTAKE TUBES (645301-)	30 - 14	1E9	ARM, ROCKER (EARLY DESIGN)	25 - 29
3E3	AIR CLEANER PLUGGED SWITCH, 6076.....	40 - 60	2F11	ARMATURE (DENSO) (12V F4)	26 - 90
3C15	AIR CONDITIONER AND HEATER (WIRING HARNESS) (-660300)	40 - 22	1G23	ARMATURE (DENSO) (12V F4) (ESN 136851-499999)	25 - 98
3C23	AIR CONDITIONER AND HEATER SWITCH.....	40 - 30	5E4	ARMATURE KIT, SOLENOID CONTROL VALVE, RELIEF VALVE MODULE	70 - 59
3C21	AIR CONDITIONER PRESSURIZER FAN KIT (640301-650300)	40 - 28	1H3	ARMATURE, STARTER (ND) (NO. 028000-3292) (6076)(EARLY DESIGN).....	25 - 103
3C19	AIR CONDITIONER THERMOSTAT KIT (630301-640300)	40 - 26	6E11	ARMREST (L.H.)	90 - 68
3C15	AIR CONDITIONER WIRING HARNESS (-660300)	40 - 22	6E7	ARMREST ADJUSTING MECHANISM (R.H.) (-640300)	90 - 64
3C17	AIR CONDITIONER WIRING HARNESS (660301-)	40 - 24	6E9	ARMREST ADJUSTING MECHANISM, R.H. (640301-)	90 - 66
6E20	AIR CONDITIONING & HEATER AND PRESSURIZING FAN	90 - 78	3C9	ARMREST PANEL, OPERATOR'S	40 - 14
6D1	AIR CONDITIONING AND HEATER DUCTS	90 - 33	3C9	ARMREST ROCKER SWITCHES	40 - 14
6F3	AIR CONDITIONING COMPRESSOR (-650300) R-12	90 - 86	3C7	ARMREST WIRING HARNESS	40 - 12
6F8	AIR CONDITIONING COMPRESSOR (650301-) R134A	90 - 92	6E5	ARMREST WITH GLOVE BOX (R.H.).....	90 - 62
5G3	AIR CONDITIONING CONDENSER AND OIL COOLER FOR 9600 253 HP	70 - 110	7E9	ARMS, FRAME, PRECLEANER CHAFFER	120 - 64
6E22	AIR CONDITIONING SYSTEM	90 - 80	4E10	ARMS, STEERING, CAM LOBE MOTOR (STEERABLE MOTOR).....	50 - 64
6E24	AIR CONDITIONING SYSTEM (-650300) R-12	90 - 82	3C9	ASHTRAY	40 - 14
6F1	AIR CONDITIONING SYSTEM (650301-) R134A	90 - 84	2C3	ASSEMBLY, COMPLETE BLOCK (ESN 500000-)	26 - 6
6E18	AIR CONDITIONING/HEATER HOUSING AND FILTERS.....	90 - 76	5E22	ASSEMBLY, SIX STACK SOLENOID CONTROL VALVE (660301-)	70 - 80
3E3	AIR INLET TEMP SWITCH (253 HP), 6076.....	40 - 60	9E17	AUGER BELTS	170 - 2
1C15	AIR INTER COOLER, RADIATOR WITH OIL COOLER AND A/C CONDENSER	20 - 22	9D24	AUGER COVERS AND CHANNEL, CROSS	130 - 56
6D19	AIR SEAT SUSPENSION (660301-)	90 - 52	5H19	AUGER DRIVE MUD SHIELD, R.H.	80 - 30
6D21	AIR SEAT SUSPENSION KITS (665301-).....	90 - 54	8I6	AUGER DRIVE SHIELD, UPPER TAILINGS	125 - 62
6D23	AIR SEAT SUSPENSION KITS (665301-).....	90 - 56	8I8	AUGER DRIVE SHIELD, UPPER TAILINGS	125 - 64
			8I6	AUGER DRIVE, UPPER TAILINGS	125 - 62
			8I8	AUGER DRIVE, UPPER TAILINGS	125 - 64
			9C5	AUGER HOUSING, LOADING, UPPER CLEAN GRAIN	130 - 12
			9C7	AUGER HOUSING, LOADING, UPPER CLEAN GRAIN (660301-).....	130 - 14
			3D21	AUGER SENSOR AND WIRING HARNESS, UNLOADING (660301-).....	40 - 54
			5E10	AUGER SWING, SOLENOID CONTROL VALVE DOUBLE PILOTED (-650300)	70 - 66
			9D9	AUGER SWIVEL SUPPORT AND BRACES	130 - 42
			9C5	AUGER TRANSITION HOUSING	130 - 12
			8H19	AUGER TROUGH, LOWER TAILINGS.....	125 - 50

ALPHABETICAL INDEX - CONTINUED

<i>GRID</i>	<i>PAGE</i>	<i>GRID</i>	<i>PAGE</i>
8H9	125 - 40	9B23	130 - 6
8H5	125 - 36	9B21	130 - 4
8D21	121 - 52	9B23	130 - 6
7E11	120 - 66	9D3	130 - 36
7E13	120 - 67A	2G3	30 - 12
7E15	120 - 68	2G5	30 - 14
7E17	120 - 70	7D19	120 - 50
7E9	120 - 64	7D21	120 - 52
7E5	120 - 60	8E1	121 - 56
7E3	120 - 58	7D19	120 - 50
811	125 - 57	7D21	120 - 52
9B21	130 - 4	7D23	120 - 54
9B23	130 - 6	7E1	120 - 56
6H3	110 - 36	7D17	120 - 48
6H4	110 - 37	6G16	110 - 24
8H23	125 - 54	6F3	90 - 86
9D24	130 - 56	6F4	90 - 87
9D5	130 - 38	6F9	90 - 93
5G11	70 - 118	8C17	121 - 24
9D3	130 - 36	6H9	110 - 42
3C9	40 - 14	6F3	90 - 86
3C1	40 - 6	2F11	26 - 90
6D2	90 - 34	1G23	25 - 98
3F15	40 - 96	1H2	25 - 102
3F11	40 - 92	4H11	60 - 24
3F8	40 - 89	6E14	90 - 72
3F9	40 - 90	2F23	30 - 8
3F11	40 - 92	2G1	30 - 10
3F8	40 - 89	1G25	25 - 100
3F9	40 - 90	5H1	80 - 12
3E13	40 - 70	5H3	80 - 14
9B21	130 - 4	5H5	80 - 16
9B23	130 - 6	5H7	80 - 18
9C14	130 - 22	2C3	26 - 6
9C14	130 - 22	6E24	90 - 82
9C14	130 - 22	6F1	90 - 84
9C12	130 - 20	6F4	90 - 87
9C16	130 - 24	6F9	90 - 93
9C18	130 - 26	6F3	90 - 86
9C3	130 - 10	6F5	90 - 88
9C3	130 - 10	6F6	90 - 90
9C3	130 - 10	6F11	90 - 95
9C1	130 - 8	6F4	90 - 87
9C9	130 - 16	6F3	90 - 86
9C5	130 - 12	6F8	90 - 86
9C7	130 - 14	9E18	170 - 3
9C11	130 - 18		
9B19	130 - 2		
9B19	130 - 2		
9B21	130 - 4		

ALPHABETICAL INDEX - CONTINUED

GRID		PAGE	GRID		PAGE
6F3	COMPRESSOR, CLUTCH PULLEY (-650300) R-12	90 - 86	4C1	CONTROL CABLES, HYDROSTATIC DRIVE (645301-)	50 - 6
3F1	CONCAVE ADJUSTING MOTOR	40 - 82	3C9	CONTROL PANEL, OPERATOR'S ARMREST	40 - 14
7D5	CONCAVE INDICATOR, CABLE AND BRACKETS.....	120 - 36	2E3	CONTROL UNIT, ELECTRONIC (6076HH030) (ROBERT BOSCH).....	26 - 60
7D7	CONCAVE INDICATOR, CORN AND SMALL GRAIN....	120 - 38	2E5	CONTROL UNIT, ELECTRONIC (6076HH034) (ROBERT BOSCH).....	26 - 61A
7C15	CONCAVE, RASP BAR AND GRATE	120 - 22	3F13	CONTROL UNIT, ELECTRONIC (ECU)	40 - 94
7C17	CONCAVE, RASP BAR AND GRATE	120 - 24	2E9	CONTROL UNIT, ELECTRONIC (6076HH031) (RB) (LATE DESIGN F.I.P.)	26 - 64
7D1	CONCAVE, SPIKE TOOTH.....	120 - 32	2E11	CONTROL UNIT, ELECTRONIC (6076HH035) (RB) (LATE DESIGN F.I.P.)	26 - 65A
7C19	CONCAVE, SPIKE-TOOTH	120 - 26	4E13	CONTROL VALVE	50 - 67
7C23	CONCAVE, SPIKE-TOOTH	120 - 30	4E12	CONTROL VALVE (-655300).....	50 - 66
6E24	CONDENSER, AIR CONDITIONER (-650300) R-12	90 - 82	5E22	CONTROL VALVE MODULE, SIX STACK SOLENOID ASSEMBLY & MOUNTINGS (660301-)	70 - 80
6F1	CONDENSER, AIR CONDITIONER (650301-) R134A	90 - 84	4E14	CONTROL VALVE SOLENOID (FOUR-WHEEL DR.)	50 - 68
5G3	CONDENSER, AIR CONDITIONING AND OIL COOLER FOR 9600 253 HP	70 - 110	6F12	CONTROL VALVE, HEATER	90 - 96
1D9	CONDITIONER, COOLANT.....	25 - 2	4D9	CONTROL VALVE, HYDRO. DR. DISPLACEMENT	50 - 38
2B24	CONDITIONER, COOLANT.....	26 - 3	5E15	CONTROL VALVE, SOLENOID - CONTOUR MASTER (660301-)	70 - 72
1D23	CONNECTING RODS	25 - 17	5E12	CONTROL VALVE, SOLENOID, FOR AUGER SWING..	70 - 68
2C12	CONNECTING RODS (6076)	26 - 15	6E7	CONTROL, ARMREST ADJUSTING MECHANISM, R.H. (-640300).....	90 - 64
1G16	CONNECTORS, ELECTRICAL, WEATHERPACK	25 - 90	3G8	CONVENIENCE OUTLET	40 - 114
3F17	CONNECTORS, ELECTRICAL, WEATHERPACK	40 - 98	3G10	CONVENIENCE OUTLET (660301-).....	40 - 116
2F5	CONNECTORS, ELECTRICAL, WEATHERPACK (6076).....	26 - 84	5C8	CONVERSION PARTS, HUDRAULIC, 200 SERIES CUTTING PLATFORM.....	70 - 13
1G10	CONNECTORS, FUEL INJECTION PUMP HOUSING (ND) (TH001/HH003)(ESN -499999)	25 - 82	9E17	CONVEYOR AUGER BELTS,	170 - 2
2E14	CONNECTORS, FUEL INJECTION PUMP HOUSING (ND) (6076HH031) (EARLY DESIGN F.I.P.)	26 - 67	8D21	CONVEYOR AUGERS, SIEVE, CHAFFER DRIVE AND STRAW WALKER.....	121 - 52
2E15	CONNECTORS, FUEL INJECTION PUMP HOUSING (RB)(HH031ORHH035)(LATE DESIGN F.I.P.)	26 - 68	8D19	CONVEYOR AUGERS, STRAW WALKER, SIEVE AND CHAFFER DRIVE	121 - 50
1G9	CONNECTORS, FUEL INJECTION PUMP HOUSING (ROBERT BOSCH) (6076HH001/HH004).....	25 - 81	9B21	CONVEYOR CHAIN, CLEAN GRAIN	130 - 4
1F17	CONNECTORS, FUEL INJECTION PUMP HOUSING (6076) (ROBERT BOSCH) (EARLY DESIGN)	25 - 63	9B23	CONVEYOR CHAIN, CLEAN GRAIN	130 - 6
2E13	CONNECTORS, FUEL INJECTION PUMP HOUSING (6076HH030, HH032, HH034, HH036).....	26 - 66	1D9	COOLANT CONDITIONER, ENGINE	25 - 2
3G4	CONNECTORS, HARNESS, UPPER (6076 ENGINE)....	40 - 110	2B24	COOLANT CONDITIONER, ENGINE	26 - 3
3G2	CONNECTORS, LOWER HARNESS FOR 6076 ENGINE	40 - 108	2D12	COOLANT HEATER, ENGINE	26 - 44
3F25	CONNECTORS, SUPPLEMENTARY TERMINALS	40 - 106	1C11	COOLANT HEATER, ENGINE BLOCK.....	20 - 18
6E5	CONSOLE GLOVE BOX AND ARM REST, R.H.	90 - 62	2G11	COOLANT RECOVERY TANK	30 - 20
3B24	CONSOLE PANEL, OVERHEAD.....	40 - 4	1D9	COOLANT SCAN TEST KIT	25 - 2
6G16	CONTOUR MASTER - FEEDER HOUSE FRAME, TILT BEAM & CLOSURE PLATES (660301-).....	110 - 24	2B24	COOLANT SCAN TEST KIT	26 - 3
6H23	CONTOUR MASTER DRIVESHAFT	110 - 55A	2D4	COOLER AND OIL FILTER HOUSING (ESN 500000-).....	26 - 34
6H21	CONTOUR MASTER DRIVESHAFT (660301-)	110 - 54	1F5	COOLER, ENGINE OIL (EARLY DESIGN) (ESN -499999).....	25 - 50
5D5	CONTOUR MASTER HYDRAULIC HOSES, L.H SIDE (OPTIONAL) (660301-)	70 - 34	2D4	COOLER, ENGINE OIL (ESN 500000-)	26 - 34
6G20	CONTOUR MASTER LOCKOUT ADAPTER KIT (BELT PU & 4R CORN HEADS) (660301-)	110 - 28	5C11	COOLER, OIL, FEEDER HOUSE	70 - 16
5E3	CONTOUR MASTER SOLENOID CONTROL RELIEF VALVE	70 - 58	9E18	COOLING FAN BELTS	170 - 3
5E15	CONTOUR MASTER SOLENOID CONTROL VALVE (660301-)	70 - 72	7D7	CORN AND SMALL GRAIN CONCAVE INDICATOR	120 - 38
5F17	CONTOUR MASTER TILT CYLINDER (660301-)	70 - 100	8G3	CORN CURTAIN AND DEFLECTORS	125 - 10
5F19	CONTOUR MASTER TILT CYLINDER HOSES AND FITTINGS (660301-)	70 - 102	7C5	CORN CYLINDER DOOR (ARGENTINA ONLY)	120 - 12
3D11	CONTOUR MASTER WIRING HARNESS	40 - 44	5I5	CORNER SHEET, R H FRONT	80 - 40
3D13	CONTOUR MASTER WIRING HARNESS ADAPTER	40 - 46	5I7	CORNER SHEET, REAR, L H	80 - 42
6G14	CONTOUR MASTER, FEEDER HOUSE SHELL, WEAR PLATES AND SEALS (660301-)	110 - 22	8D13	COUNTERSHAFT DRIVE, SECONDARY.....	121 - 44
6G18	CONTOUR MASTER, LOCKOUT ASSEMBLY (OPTIONAL) (660301-)	110 - 26	9E1	COUNTERSHAFT DRIVE, UNLOADING AUGER	130 - 58
4B23	CONTROL CABLES, HYDROSTATIC DRIVE (-645300)	50 - 4	8C13	COUNTERSHAFT GEARCASE, PRIMARY (-640300)	121 - 20
			8C11	COUNTERSHAFT GEARCASE, PRIMARY (640301-)	121 - 18
			8C9	COUNTERSHAFT, PRIMARY, GEARCASE (-640300)	121 - 16
			8C15	COUNTERSHAFT, PRIMARY, GEARCASE (640301-)	121 - 22
			1C10	COUPLING WITH HUB, ENGINE-TRANSMISSION.....	20 - 17
			1F9	COUPLING, INTAKE MANIFOLD (ESN -499999).....	25 - 54

ALPHABETICAL INDEX - CONTINUED

GRID		PAGE	GRID		PAGE
9F5	DECALS, SAFETY AND LOCATIONS	170 - 14	9C14	DRIVE IDLER, CLEAN GRAIN ELEVATOR	130 - 22
9F7	DECALS, SAFETY AND LOCATIONS - FRENCH.....	170 - 16	8C7	DRIVE SHAFT, GEARCASE AND PRIMARY COUNTERSHAFT	121 - 14
9F11	DECALS, SAFETY AND LOCATIONS - FRENCH.....	170 - 20	4C8	DRIVE SHAFTS	50 - 13
9F15	DECALS, SAFETY AND LOCATIONS - FRENCH.....	170 - 24	4C9	DRIVE SHAFTS	50 - 14
9F19	DECALS, SAFETY AND LOCATIONS - FRENCH.....	170 - 28	5H23	DRIVE SHIELD, R.H. REAR	80 - 34
9F23	DECALS, SAFETY AND LOCATIONS - FRENCH.....	170 - 32	6G8	DRIVE SHIELDS, CONTOUR MASTER FEEDER HOUSE (660301-661261)	110 - 16
9G16	DECALS, TOP	170 - 50	6G10	DRIVE SHIELDS, CONTOUR MASTER FEEDER HOUSE (661262-)	110 - 18
8F20	DECK, SUPPORTS AND FINS, STRAW CHOPPER.....	125 - 2	6G6	DRIVE SHIELDS, SAFETY STOP, FEEDER HOUSE	110 - 14
8G3	DEFLECTORS AND CORN CURTAIN	125 - 10	8F1	DRIVE SHIELDS, STRAW CHOPPER (640301-)	121 - 80
9E13	DIAL-A-MATIC ELECTRICAL HARNESS	160 - 4	9C14	DRIVE TIGHTENER, CLEAN GRAIN ELEVATOR	130 - 22
9E11	DIAL-A-MATIC HEADER HEIGHT CONTROL HYDRAULIC LINE AND VALVE BLOCK	160 - 2	8E11	DRIVE TIGHTENER, FEEDER HOUSE	121 - 66
9E12	DIAL-A-MATIC HEADER HEIGHT CONTROL VALVE BLOCK SOLENOID	160 - 3	6G4	DRIVE TIGHTENER, FIXED SPEED FEEDER HOUSE.....	110 - 12
5D11	DIAL-A-MATIC HEADER HEIGHT CONTROL, VALVE BLOCK SOLENOID	70 - 41	6G3	DRIVE TIGHTENER, VARIABLE SPEED	110 - 10
4C23	DIFFERENTIAL GEARS	50 - 28	4C3	DRIVE WHEELS	50 - 8
4C23	DIFFERENTIAL SHAFTS.....	50 - 28	4C4	DRIVE WHEELS, HIGH FLOATATION PLANETARY FINAL DRIVE	50 - 9
3B22	DIGITAL TACH CONNECTOR, WIRING HARNESS	40 - 2	8E13	DRIVE, BELT PICKUP / REEL PUMP MOUNTING SHEAVE	121 - 68
1D12	DIPSTICK TUBE	25 - 6	8E1	DRIVE, CLEANING FAN, SEPARATOR	121 - 56
1E8	DIPSTICK, ENGINE OIL (EARLY DESIGN) (ESN -499999).....	25 - 28	9E1	DRIVE, COUNTERSHAFT, UNLOADING AUGER.....	130 - 58
2C19	DIPSTICK, ENGINE OIL (ESN 500000-)	26 - 22	9E18	DRIVE, CYLINDER INTERMEDIATE, BELTS	170 - 3
8G11	DISC AND DRIVE BELT, CHAFF SPREADER (-650300)	125 - 18	9E18	DRIVE, CYLINDER, BELTS.....	170 - 3
8G13	DISC, CHAFF SPREADER (DUAL MOTOR) (650301-)	125 - 20	8E9	DRIVE, FAN, SPEED CONTROL SHEAVE LINKAGE....	121 - 64
4D9	DISPLACEMENT CONTROL VALVE, HYDRO. DR.	50 - 38	8D15	DRIVE, GEARCASE, STRAW WALKER.....	121 - 46
3B22	DOMELIGHT, WIRING HARNESS	40 - 2	4D11	DRIVE, HYDROSTATIC MOTOR	50 - 40
6C3	DOOR LATCH, CAB	90 - 10	4D21	DRIVE, HYDROSTATIC MOTOR	50 - 50
6C5	DOOR, CAB AND GLASS.....	90 - 12	4F9	DRIVE, HYDROSTATIC OIL HOSES, UPPER.....	50 - 88
8G5	DOOR, CHOPPER STRAW.....	125 - 12	4F11	DRIVE, HYDROSTATIC OIL HOSES, UPPER (655301-)	50 - 90
9B19	DOOR, CLEAN GRAIN LOWER AUGER	130 - 2	4E20	DRIVE, HYDROSTATIC, LOWER OIL LINES (-655300)	50 - 74
519	DOOR, CORNER SHEET, LEFT - HAND FRONT.....	80 - 44	4E24	DRIVE, HYDROSTATIC, LOWER OIL LINES (-655300)	50 - 78
7C1	DOOR, CYLINDER (CORN AND GRAIN) (650301-656005)	120 - 8	4F1	DRIVE, HYDROSTATIC, LOWER OIL LINES (FOUR WHEEL DRIVE) (655301-)	50 - 80
7B24	DOOR, CYLINDER (FOR CORN) (-650300)	120 - 6	4F3	DRIVE, HYDROSTATIC, LOWER OIL LINES (TWO WHEEL DRIVE) (655000-)	50 - 82
7B22	DOOR, CYLINDER (LESS CYLINDER BAFFLE).....	120 - 4	5C15	DRIVE, REEL, HYD., FRONT LINES AND HOSES.....	70 - 20
7C3	DOOR, CYLINDER (656006-).....	120 - 10	5B23	DRIVE, REEL, HYDRAULIC LINES AND HOSES, L.H.	70 - 4
7C5	DOOR, CYLINDER DOOR (ARGENTINA ONLY)	120 - 12	1B18	DRIVE, ROTARY SCREEN (-645300)	20 - 1
5G20	DOOR, ENGINE ACCESS.....	80 - 6	8D13	DRIVE, SECONDARY COUNTERSHAFT.....	121 - 44
5G20	DOOR, RADIATOR	80 - 6	8E23	DRIVE, STRAW CHOPPER, SHIELDS (-640300)	121 - 78
1B21	DOOR, ROTARY SCREEN (-640300)	20 - 4	1C1	DRIVES, ENGINE FAN, 6076	20 - 8
8G5	DOOR, STRAW CHOPPER.....	125 - 12	1C3	DRIVES, ENGINE FAN, 6076	20 - 10
5E10	DOUBLE PILOTED, AUGER SWING, SOLENOID CONTROL VALVE (-650300).....	70 - 66	8E15	DRIVES, STRAW CHOPPER (FRONT)	121 - 70
5E13	DOUBLE PILOTED, REEL FORE/AFT, SOLENOID CONTROL VALVE (-650300)	70 - 70	8E19	DRIVES, STRAW CHOPPER, (REAR)	121 - 74
8G11	DRIVE BELT AND DISC, CHAFF SPREADER (-650300)	125 - 18	8E17	DRIVES, STRAW CHOPPER, FINE CUT (FRONT)	121 - 72
9E3	DRIVE BELT GUIDE, UNLOADING AUGER	130 - 60	8E21	DRIVES, STRAW CHOPPER, FINE CUT (REAR).....	121 - 76
8H24	DRIVE BRACKET, TAILINGS	125 - 55	6H23	DRIVESHAFT, CONTOUR MASTER	110 - 55A
811	DRIVE CHAIN TIGHTENER, UPPER TAILINGS	125 - 57	6H21	DRIVESHAFT, CONTOUR MASTER (660301-)	110 - 54
4B23	DRIVE CONTROL CABLES, HYDROSTATIC (-645300)	50 - 4	4H3	DRUM, BRAKE.....	60 - 16
4C1	DRIVE CONTROL CABLES, HYDROSTATIC (645301-)	50 - 6	6H3	DRUM, CHAIN AND FEEDER CONVEYOR IDLER SHAFT	110 - 36
2C13	DRIVE GEAR, OIL PUMP (ESN 500000-)	26 - 16	3E13	DUAL LEVEL MONITOR	40 - 70
1D24	DRIVE GEAR, OIL PUMP (HH001 OR HH004) (ESN -499999)(MKD RE53201)	25 - 18	4C5	DUAL WHEELS, WIDE-SPACED (PLANETARY FINAL DRIVE)	50 - 10
1D25	DRIVE GEAR, OIL PUMP (HH003) (LATE DESIGN).....	25 - 19	8D11	DUAL-RANGE CYLINDER DRIVE ADJUSTING BRACKET.....	121 - 42
1D24	DRIVE GEAR, OIL PUMP (TH001 - EARLY DESIGN) (STD HP)(MKD RE53201)	25 - 18	8D1	DUAL-RANGE CYLINDER DRIVE GEAR CASE	121 - 32
8D17	DRIVE GEARCASE, STRAW WALKER	121 - 48			
1H3	DRIVE HOUSING, STARTER (ND) (NO. 028000-3292) (6076)(EARLY DESIGN).....	25 - 103			

ALPHABETICAL INDEX - CONTINUED

<i>GRID</i>		<i>PAGE</i>	<i>GRID</i>		<i>PAGE</i>
8D7	DUAL-RANGE CYLINDER DRIVE INTERMEDIATE SHAFT MOUNTING.....	121 - 38	2E1	ELECTRONIC FUEL INJECTION PUMP (6076HH030)(EARLY DESIGN).....	26 - 58
8D9	DUAL-RANGE CYLINDER DRIVE INTERMEDIATE SHEAVE.....	121 - 40	2E5	ELECTRONIC FUEL INJECTION PUMP (6076HH034) (ROBERT BOSCH).....	26 - 61A
8D5	DUAL-RANGE CYLINDER DRIVE TIGHTENER	121 - 36	2E9	ELECTRONIC FUEL INJECTION PUMP (RB) (6076HH031)(LATE DESIGN F.I.P.).....	26 - 64
8D3	DUAL-RANGE LOCKOUT ARM	121 - 34	2E11	ELECTRONIC FUEL INJECTION PUMP (RB) 6076HH035) (LATE DESIGN F.I.P.).....	26 - 65A
6D1	DUCTS, HEATER AND AIR CONDITIONING	90 - 33	3F15	ELECTRONIC MODULE, CENTRAL AND CIRCUIT BOARDS	40 - 96
6I5	DUST FAN BELT, LH SIDE FEEDER HOUSE-RETROFIT INSTALLATION.....	110 - 60	7E11	ELEMENT, CHAFFER	120 - 66
6I7	DUST FAN, LH SIDE FEEDER HOUSE-RETROFIT INSTALLATION.....	110 - 62	7E13	ELEMENT, CHAFFER	120 - 67A
	E		7E15	ELEMENT, CHAFFER EXTENSION	120 - 68
1G1	E.C.U. (HH001) (EARLY DESIGN ENGINE)	25 - 72	7E19	ELEMENT, SIEVE	120 - 72
1G5	E.C.U. (HH003) (LATE DESIGN STD. HP ENGINE) (ESN 149284-499999).....	25 - 76	9C14	ELEVATOR DRIVE IDLER, CLEAN GRAIN.....	130 - 22
2E3	E.C.U. (ROBERT BOSCH) (6076HH030)	26 - 60	9C14	ELEVATOR DRIVE TIGHTENER, CLEAN GRAIN.....	130 - 22
2E5	E.C.U. (ROBERT BOSCH) (6076HH034)	26 - 61A	9C16	ELEVATOR SHIELDS, UPPER CLEAN GRAIN (-640603)	130 - 24
1G3	E.C.U. (TH001) (EARLY DESIGN STD. HP ENGINE).....	25 - 74	9C18	ELEVATOR SHIELDS, UPPER CLEAN GRAIN (640604-).....	130 - 26
2E7	E.C.U. (6076HH031) (DENSO) (EARLY DESIGN F.I.P.)	26 - 62	9E18	ELEVATOR, CLEAN GRAIN BELTS.....	170 - 3
2E9	E.C.U. (6076HH031) (ROBERT BOSCH) (LATE DESIGN F.I.P.)	26 - 64	9B21	ELEVATOR, LOWER, CLEAN GRAIN	130 - 4
2E11	E.C.U. (6076HH035) (ROBERT BOSCH) (LATE DESIGN F.I.P.)	26 - 65A	9B23	ELEVATOR, LOWER, CLEAN GRAIN	130 - 6
2E1	ECU (6076HH030) (EARLY DESIGN)	26 - 58	9C1	ELEVATOR, UPPER CLEAN GRAIN	130 - 8
3F13	ECU, ELECTRONIC CONTROL UNIT	40 - 94	5G20	ENGINE ACCESS DOOR, HANDRAILS, AND RADIATOR DOOR.....	80 - 6
3E5	EITHER START SOLENOID, 6076	40 - 62	5H9	ENGINE ACCESS PLATFORM AND STEP	80 - 20
3E7	EITHER START SOLENOID, 6076	40 - 64	3D24	ENGINE AIR FILTER WARNING SWITCH.....	40 - 57
1F6	ELBOW, HEATER RETURN (EARLY DESIGN) (ESN -499999).....	25 - 51	3E23	ENGINE ALTERNATOR MOUNTING	40 - 80
3F19	ELECTRICAL CONNECTOR SERVICE KIT	40 - 100	3F11	ENGINE CIRCUIT BREAKERS	40 - 92
3F21	ELECTRICAL CONNECTOR SERVICE KIT	40 - 102	3F8	ENGINE CIRCUIT BREAKERS (-660300)	40 - 89
9E13	ELECTRICAL HARNESS, DIAL-A-MATIC.....	160 - 4	3F9	ENGINE CIRCUIT BREAKERS (660301-).....	40 - 90
3G1	ELECTRICAL SERVICE OUTLET.....	40 - 107	5H1	ENGINE COMPARTMENT (-640300)	80 - 12
1G16	ELECTRICAL TERMINALS AND CONNECTORS, WEATHERPACK	25 - 90	5H3	ENGINE COMPARTMENT (-640300)	80 - 14
3F17	ELECTRICAL TERMINALS AND CONNECTORS, WEATHERPACK	40 - 98	5H5	ENGINE COMPARTMENT (640301-).....	80 - 16
2F5	ELECTRICAL TERMINALS AND CONNECTORS, WEATHERPACK (6076)	26 - 84	5H7	ENGINE COMPARTMENT (640301-).....	80 - 18
8C17	ELECTROMAGNETIC HEADER CLUTCH	121 - 24	2D12	ENGINE COOLANT HEATER	26 - 44
2E3	ELECTRONIC CONTROL UNIT (6076HH030) (ROBERT BOSCH).....	26 - 60	9E17	ENGINE DRIVE BELTS.....	170 - 2
2E5	ELECTRONIC CONTROL UNIT (6076HH034) (ROBERT BOSCH).....	26 - 61A	1C3	ENGINE FAN DRIVES 6076	20 - 10
3F13	ELECTRONIC CONTROL UNIT (ECU).....	40 - 94	1C1	ENGINE FAN DRIVES, 6076	20 - 8
1G1	ELECTRONIC CONTROL UNIT (HH001) (EARLY DESIGN ENGINE).....	25 - 72	5G5	ENGINE GEARCASE OIL FILTER ASSEMBLY	70 - 112
1G5	ELECTRONIC CONTROL UNIT (HH003) (LATE DESIGN STD. HP ENGINE) (149284-499999)	25 - 76	5G7	ENGINE GEARCASE PRESSURE REGULATOR	70 - 114
1G3	ELECTRONIC CONTROL UNIT (TH001) (EARLY DESIGN STD. HP ENGINE).....	25 - 74	5G13	ENGINE GEARCASE SOLENOID VALVE (PRESSURE REGULATOR)	70 - 120
2E9	ELECTRONIC CONTROL UNIT (6076HH031) (RB) (LATE DESIGN F.I.P.)	26 - 64	8B24	ENGINE GEARCASE- SEPARATOR DRIVE WET- CLUTCH AND PUMP DRIVE SHAFT	121 - 6
2E11	ELECTRONIC CONTROL UNIT (6076HH035) (RB) (LATE DESIGN F.I.P.)	26 - 65A	8B20	ENGINE GEARCASE- STRAW CHOPPER, UNLOADING DRIVE AND SEPARATOR DRIVE GEAR	121 - 2
1G1	ELECTRONIC FUEL INJECTION PUMP (HH001) (EARLY DESIGN ENGINE)	25 - 72	8C3	ENGINE GEARCASE, SEPARATOR AND PUMP DRIVE	121 - 10
2E3	ELECTRONIC FUEL INJECTION PUMP (6076HH030) (ROBERT BOSCH).....	26 - 60	8C5	ENGINE GEARCASE, SEPARATOR AND PUMP DRIVE	121 - 12
			8C1	ENGINE GEARCASE, SEPARATOR DRIVE WET- CLUTCH AND PUMP DRIVE SHAFT	121 - 8
			8B22	ENGINE GEARCASE, STRAW CHOPPER, UNLOAD- ING DRIVE AND SEPARATOR DRIVE GEAR	121 - 4
			1C5	ENGINE INTERCOOLER.....	20 - 12
			1C7	ENGINE MOUNTS (-640300).....	20 - 14
			1C8	ENGINE MOUNTS (640301-655524)	20 - 15
			1C9	ENGINE MOUNTS (655525-).....	20 - 16
			1C7	ENGINE MOUNTS AND REAR SUPPORT (-640300).....	20 - 14
			1C8	ENGINE MOUNTS AND REAR SUPPORT (640301-655524)	20 - 15
			1C9	ENGINE MOUNTS AND REAR SUPPORT (655525-)	20 - 16
			1D8	ENGINE OIL (TORQ-GARD PLUS-50).....	25 - 1

ALPHABETICAL INDEX - CONTINUED

GRID		PAGE	GRID		PAGE
2B23	ENGINE OIL (TORQ-GARD PLUS-50)	26 - 1	2C9	EXPANDED ENGINE OVERHAUL KIT(S) (ESN 500000-)	26 - 12
1F5	ENGINE OIL COOLER (EARLY DESIGN) (ESN -499999)	25 - 50	1D20	EXPANDED ENGINE OVERHAUL KITS (ESN -499999)	25 - 14
2D4	ENGINE OIL COOLER (ESN 500000-)	26 - 34	6F16	EXPORT ONLY, CAB POST INSTRUMENT PANEL, LH.....	90 - 100
1E8	ENGINE OIL DIPSTICK (EARLY DESIGN) (ESN -499999)	25 - 28	4C11	EXPORT, TRANSMISSION (-657284)	50 - 16
2C19	ENGINE OIL DIPSTICK (ESN 500000-)	26 - 22	4C12	EXPORT, TRANSMISSION (657285-)	50 - 17
2C19	ENGINE OIL DIPSTICK TUBE (ESN 500000-)	26 - 22	1C11	EXTENSION CORD, ENGINE BLOCK COOLANT HEATER	20 - 18
1E8	ENGINE OIL DIPSTICK TUBE (EARLY DESIGN) (ESN -499999)	25 - 28	7E15	EXTENSION ELEMENT, CHAFFER	120 - 68
1E22	ENGINE OIL FILTER (ESN -499999)	25 - 42	9D1	EXTENSION, GRAIN TANK	130 - 34
2D4	ENGINE OIL FILTER (ESN 500000-)	26 - 34			
3E5	ENGINE OIL PRESSURE SENDING UNIT	40 - 62		F	
3E7	ENGINE OIL PRESSURE SENDING UNIT	40 - 64	5H21	FAN DRIVE SHIELD, L.H.	80 - 32
1E14	ENGINE OIL PUMP (EARLY DESIGN OIL PUMP) (ESN -499999)	25 - 34	8E3	FAN DRIVE SPEED CONTROL LINKAGE (-640300)	121 - 58
2D1	ENGINE OIL PUMP (ESN 500000-)	26 - 30	8E5	FAN DRIVE SPEED CONTROL LINKAGE (640301-655300)	121 - 60
1E16	ENGINE OIL PUMP (LATE DESIGN OIL PUMP) (ESN -499999)	25 - 36	8E7	FAN DRIVE SPEED CONTROL LINKAGE (655301-)	121 - 62
2D3	ENGINE OIL PUMP INTAKE	26 - 32	8E9	FAN DRIVE SPEED CONTROL SHEAVE LINKAGE.....	121 - 64
1E18	ENGINE OIL PUMP INTAKE (REPLACEMENT) (USED WITH RE44118 OR RE60622)	25 - 38	1C3	FAN DRIVES, ENGINE, 6076	20 - 10
2C9	ENGINE OVERHAUL KIT(S) (ESN 500000-)	26 - 12	3C21	FAN, AIR CONDITIONER PRESSURIZER KIT (640301-650300)	40 - 28
1D20	ENGINE OVERHAUL KITS (ESN -499999)	25 - 14	6E20	FAN, AIR CONDITIONING & HEATER AND PRESSURIZING	90 - 78
3D24	ENGINE PLUGGED AIR FILTER WARNING SWITCH ..	40 - 57	7D19	FAN, CLEANING	120 - 50
5H1	ENGINE RAILS	80 - 12	7D21	FAN, CLEANING	120 - 52
5H3	ENGINE RAILS	80 - 14	9E19	FAN, CLEANING, BELTS	170 - 4
5H5	ENGINE RAILS	80 - 16	8E1	FAN, DRIVE, CLEANING, SEPARATOR	121 - 56
5H7	ENGINE RAILS	80 - 18	6I7	FAN, DUST, LH SIDE FEEDER HOUSE-RETROFIT INSTALLATION.....	110 - 62
1G18	ENGINE REBUILD GASKET KIT (ESN -499999)	25 - 92	1C1	FAN, 6076 ENGINE	20 - 8
2F7	ENGINE REBUILD GASKET KIT (ESN 500000-)	26 - 86	6H7	FEED PLATE LATCH HANDLE	110 - 40
1H5	ENGINE SPEED SENSOR (EARLY DESIGN)	25 - 105	9E17	FEEDER CONVEYOR BELTS.....	170 - 2
2F14	ENGINE SPEED SENSOR (ESN-XXXXXX)	26 - 93	6H4	FEEDER CONVEYOR BRACKET	110 - 37
3E3	ENGINE TACH SENSOR, 6076	40 - 60	6H4	FEEDER CONVEYOR DRIVE CHAIN	110 - 37
3E5	ENGINE TEMP SWITCH, 6076	40 - 62	6H5	FEEDER CONVEYOR DRIVE CHAIN, TIGHTENER AND GUIDES.....	110 - 38
3E7	ENGINE TEMP SWITCH, 6076	40 - 64	6I3	FEEDER CONVEYOR DRIVE CHAIN, TIGHTENER AND GUIDES-RETROFIT INATALLATION.....	110 - 58
3E5	ENGINE TEMPERATURE SENDING UNIT	40 - 62	6H4	FEEDER CONVEYOR IDLER	110 - 37
3E7	ENGINE TEMPERATURE SENDING UNIT	40 - 64	6H3	FEEDER CONVEYOR IDLER SHAFT, DRUM AND CHAIN	110 - 36
1D22	ENGINE UNDERHAUL KIT (STD BEARINGS)	25 - 16	5C7	FEEDER HOUSE , HYD. HOSE, VARIABLE DRIVE.....	70 - 12
2C11	ENGINE UNDERHAUL KIT (STD BRGS) (6076)	26 - 14	3H3	FEEDER HOUSE BACKSHAFT SPEED SENSOR (645316-)	40 - 134
3E5	ENGINE, LOWER HARNESS, 6076	40 - 62	9E19	FEEDER HOUSE BELTS	170 - 4
3E7	ENGINE, LOWER HARNESS, 6076	40 - 64	6G8	FEEDER HOUSE DRIVE SHIELDS - CONTOUR MASTER (660301-661261)	110 - 16
1C10	ENGINE, TRANSMISSION COUPLING WITH HUB.....	20 - 17	6G10	FEEDER HOUSE DRIVE SHIELDS - CONTOUR MASTER (661262-)	110 - 18
3E3	ENGINE, UPPER HARNESS, 6076	40 - 60	6G6	FEEDER HOUSE DRIVE SHIELDS AND SAFETY STOP	110 - 14
4H11	ETHER START BUTTON	60 - 24	8E11	FEEDER HOUSE DRIVE TIGHTENER.....	121 - 66
6E14	ETHER START BUTTON	90 - 72	6G4	FEEDER HOUSE DRIVE TIGHTENER (FIXED SPEED)	110 - 12
2F23	ETHER STARTING AID (-657740)	30 - 8	6I5	FEEDER HOUSE DUST FAN BELT, LH SIDE - RETROFIT INSTALLATION	110 - 60
2G1	ETHER STARTING AID (657740-)	30 - 10	6I7	FEEDER HOUSE DUST FAN, LH SIDE - RETROFIT INSTALLATION	110 - 62
2D20	ETHER STARTING FITTINGS (6076)	26 - 53	5C21	FEEDER HOUSE FITTINGS, HYDRAULIC, EXPORT....	70 - 26
6E24	EVAPORATOR, AIR CONDITIONER (-650300) R-12	90 - 82	6H1	FEEDER HOUSE FLOOR	110 - 34
6F1	EVAPORATOR, AIR CONDITIONER (650301-) R134A	90 - 84	6G12	FEEDER HOUSE FRAME	110 - 20
6F12	EVAPORATOR, HEATER UNIT	90 - 96			
1F16	EXHAUST MANIFOLD	25 - 62			
2D19	EXHAUST MANIFOLD	26 - 52			
1F16	EXHAUST MANIFOLD GASKETS.....	25 - 62			
2D19	EXHAUST MANIFOLD GASKETS.....	26 - 52			
2G7	EXHAUST PIPE AND MUFFLER	30 - 16			
1E10	EXHAUST VALVE SHIELD (ESN -499999)	25 - 30			
2C20	EXHAUST VALVE SHIELD (ESN 500000-)	26 - 24			
1E10	EXHAUST VALVES (ESN -499999)	25 - 30			
2C20	EXHAUST VALVES (ESN 500000-)	26 - 24			

ALPHABETICAL INDEX - CONTINUED

<i>GRID</i>	<i>PAGE</i>	<i>GRID</i>	<i>PAGE</i>
6G16	FEEDER HOUSE FRAME, TILT BEAM & CLOSURE PLATES, CONTOUR MASTER (660301-).....	4G2	FINAL DRIVE SHAFT SHIELDS - PLANETARY FINAL DRIVE.....
6H19	FEEDER HOUSE FRONT DRIVE SHAFT, SHEAVE AND MOUNTINGS (FIXED SPEED).....	4G1	FINAL DRIVE SHAFT SHIELDS - SINGLE REDUCTION.....
5C11	FEEDER HOUSE OIL COOLER.....	8F11	FINE CUT ROTOR STRAW CHOPPER (PADDLED WIDE (670820-).....
5C13	FEEDER HOUSE OIL COOLER GEARBOX FITTINGS AND HOSES.....	8F9	FINE CUT ROTOR STRAW CHOPPER (STRAIGHT WIDE (670820-).....
5C9	FEEDER HOUSE OIL COOLER LUBE OIL PUMP.....	8E17	FINE CUT STRAW CHOPPER DRIVES (FRONT).....
5C21	FEEDER HOUSE PLUMBING- EXPORT.....	8E21	FINE CUT STRAW CHOPPER DRIVES (REAR).....
6D6	FEEDER HOUSE REVERSER FOOT CONTROL.....	7D3	FINGER GRATE, SPIKE-TOOTH.....
6F24	FEEDER HOUSE REVERSER FOOT CONTROL.....	8F20	FINS, SUPPORTS AND DECK, STRAW CHOPPER.....
6G14	FEEDER HOUSE SHELL - CONTOUR MASTER (660301-).....	5C13	FITTINGS AND HOSES, OIL COOLER, GEARBOX, FEEDER HOUSE.....
6H9	FEEDER HOUSE SLIP CLUTCH.....	1D12	FITTINGS BLOCK, CYLINDER (WITH HEAD BOLTS).....
6H17	FEEDER HOUSE UPPER DRIVE SHAFT, SHEAVE AND MOUNTING (FIXED SPEED).....	2C1	FITTINGS, CYLINDER BLOCK (ESN 500000-).....
6G21	FEEDER HOUSE UPPER SHAFT (-645300).....	2D20	FITTINGS, ETHER STARTING (6076).....
6G23	FEEDER HOUSE UPPER SHAFT (645301-).....	2F17	FITTINGS, FUEL TANK.....
6G14	FEEDER HOUSE WEAR PLATES - CONTOUR MASTER (660301-).....	2F21	FITTINGS, TANK FUEL LINES.....
7B20	FEEDER HOUSE/SEPARATOR SEAL, STONE TRAP AND DOOR.....	5F19	FITTINGS, TILT CYLINDER - CONTOUR MASTER (660301-).....
6H11	FEEDER HOUSE, UPPER COUNTERSHAFT VARIABLE DRIVE.....	4I5	FIXED REAR AXLE.....
3C5	FIELD LIGHTING, AUXILIARY.....	4I10	FIXED REAR AXLE STEERING TIE RODS.....
3H1	FIELD LIGHTS (660301-).....	4I11	FIXED REAR AXLE, 4-WHEEL DRIVE, STEERING TIE RODS.....
3B24	FIELD LIGHTS SWITCH, AUX, OPTIONAL.....	6G4	FIXED SPEED FEEDER HOUSE DRIVE TIGHTENER..
2F11	FIELD WINDING COIL (12V F4).....	5G9	FLAT O-RING KIT, HYDRAULIC.....
1G23	FIELD WINDING COIL (12V F4) (ESN 136851-499999).....	6B20	FLOOR MAT, CAB.....
2G3	FILTER, AIR AND INTAKE TUBES (-645300).....	6H1	FLOOR, FEEDER HOUSE.....
2G5	FILTER, AIR AND INTAKE TUBES (645301-).....	5C1	FLOW CONTROL VALVE, REEL DRIVE.....
6C25	FILTER, CAB AIR.....	1E3	FLYWHEEL.....
1E22	FILTER, ENGINE OIL (EARLY DESIGN) (ESN -499999).....	2C16	FLYWHEEL.....
2D4	FILTER, ENGINE OIL (ESN 500000-).....	6B22	FOAM, SEALS AND SOUND DEADENING, CAB.....
2F1	FILTER, FUEL (ESN 500000-) (HH030, HH032, HH034, HH036).....	2C22	FOLLOWER, CAMSHAFT.....
2F3	FILTER, FUEL (HH031 OR HH035).....	1E9	FOLLOWER, CAMSHAFT (EARLY DESIGN).....
1G14	FILTER, FUEL (6076) (ESN -499999).....	1E6	FOLLOWER, CAMSHAFT (ESN -499999) (TH001, HH001, HH004).....
5D7	FILTER, MAIN HYDRAULIC.....	2C18	FOLLOWER, CAMSHAFT (ESN 500000-).....
5G5	FILTER, OIL, ENGINE GEARCASE.....	1E7	FOLLOWER, CAMSHAFT (6076HH003).....
1F1	FILTER, WEEP HOLE (WATER PUMP) (EARLY DESIGN) (ESN -499999).....	6D6	FOOT PEDAL, FEEDER HOUSE REVERSER.....
2D7	FILTER, WEEP HOLE (WATER PUMP) (ESN 500000-).....	6F24	FOOT PEDAL, FEEDER HOUSE REVERSER.....
6E18	FILTERS, AIR CONDITIONER AND HEATER.....	4F21	FOUR WHEEL DRIVE LINES AND HOSES, L.H. (655301-).....
6E18	FILTERS, HEATER AND AIR CONDITIONING.....	4H23	FOUR-WHEEL DRIVE.....
4C15	FINAL DRIVE (RING AND PINION).....	4H24	FOUR-WHEEL DRIVE.....
4E15	FINAL DRIVE AXLE SHAFT.....	4E12	FOUR-WHEEL DRIVE (-655300).....
4E16	FINAL DRIVE AXLE SHAFT.....	7E9	FRAME ARMS, PRECLEANER CHAFFER.....
4C17	FINAL DRIVE AXLE, GEAR AND BEARINGS.....	6C7	FRAME, CAB AND SUPPORT.....
4C16	FINAL DRIVE BEARINGS.....	7E17	FRAME, CHAFFER.....
4E15	FINAL DRIVE BEARINGS.....	6G12	FRAME, FEEDER HOUSE.....
4C16	FINAL DRIVE HOUSING AND BEARING CAP.....	6G16	FRAME, FEEDER HOUSE, CONTOUR MASTER (660301-).....
4E18	FINAL DRIVE INNER HOUSING.....	5G16	FRAME, SEPARATOR.....
4E15	FINAL DRIVE OUTER HOUSING.....	8G15	FRAME, SHIELDS AND HANDLES, CHAFF SPREADER (-650300).....
4E16	FINAL DRIVE OUTER HOUSING.....	7E21	FRAME, SIEVE.....
4E18	FINAL DRIVE PINION SHAFT.....	4F5	FRANCE, HYDROSTATIC DRIVE OIL LINES AND HOSES, LOWER.....
4E16	FINAL DRIVE PINION SHAFT BEARINGS.....	4F7	FRANCE, HYDROSTATIC DRIVE OIL LINES AND HOSES, LOWER.....
4E18	FINAL DRIVE PINION SHAFT BEARINGS.....	3C4	FRONT AND REAR TURN AND TAIL LIGHTS.....
4E18	FINAL DRIVE PINION SHAFT GEARS.....	4C6	FRONT AXLE.....
4D1	FINAL DRIVE PINION, SHAFTS AND BEARINGS.....	4C7	FRONT AXLE.....
4E15	FINAL DRIVE PLANETARY PINION.....	5I5	FRONT CORNER SHEET, R H.....
		2C17	FRONT OIL SEAL (ESN 500000-).....

ALPHABETICAL INDEX - CONTINUED

<i>GRID</i>		<i>PAGE</i>	<i>GRID</i>		<i>PAGE</i>
1E4	FRONT OIL SEAL (HH003) (EARLY DESIGN)	25 - 24	1G5	FUEL INJECTION PUMP (HH003) (LATE DESIGN STD. HP ENGINE) (ESN 149284-499999).....	25 - 76
1E5	FRONT OIL SEAL (TH001, HH001, HH004) (ESN -499999)	25 - 25	2E3	FUEL INJECTION PUMP (ROBERT BOSCH) (6076HH030)	26 - 60
6G1	FRONT SHAFT WITH REVERSER (VARIABLE)	110 - 8	2E5	FUEL INJECTION PUMP (ROBERT BOSCH) (6076HH034)	26 - 61A
5I13	FRONT SHIELD ASSEMBLY, LEFT SIDE	80 - 48	1G3	FUEL INJECTION PUMP (TH001) (EARLY DESIGN STD. HP ENGINE).....	25 - 74
5I19	FRONT SHIELD ASSEMBLY, RIGHT SIDE	80 - 54	2E1	FUEL INJECTION PUMP (6076HH030) (EARLY DESIGN)	26 - 58
4H15	FRONT STEERING HOSES AND LINES	60 - 28	2E7	FUEL INJECTION PUMP (6076HH031) (DENSO) (EARLY DESIGN F.I.P.)	26 - 62
6F20	FRONT VARIABLE DRIVE SHEAVE	110 - 2	2E9	FUEL INJECTION PUMP (6076HH031) (ROBERT BOSCH) (LATE DESIGN F.I.P.)	26 - 64
1F8	FRONT WATER MANIFOLD (HH003) (ESN -499999).....	25 - 53	2E11	FUEL INJECTION PUMP (6076HH035) (ROBERT BOSCH) (LATE DESIGN F.I.P.)	26 - 65A
1F7	FRONT WATER MANIFOLD (EARLY DESIGN ENGINE) (TH001,HH001,HH004)	25 - 52	2E15	FUEL INJECTION PUMP HOUSING CONNECTOR (RB)(HH031ORHH035)(LATE DESIGN F.I.P.)	26 - 68
2D10	FRONT WATER MANIFOLD (ESN 500000-).....	26 - 42	1G9	FUEL INJECTION PUMP HOUSING CONNECTOR (ROBERT BOSCH) (6076HH001/HH004).....	25 - 81
9G10	FRONT WHEEL DECALS	170 - 44	1F17	FUEL INJECTION PUMP HOUSING CONNECTOR (6076) (ROBERT BOSCH) (EARLY DESIGN)	25 - 63
2F1	FUEL CHECK VALVE (ESN 500000-) (HH030, HH032, HH034, HH036)	26 - 80	2E13	FUEL INJECTION PUMP HOUSING CONNECTOR (6076HH030, HH032, HH034, HH036)	26 - 66
2F3	FUEL CHECK VALVE (HH031 OR HH035)	26 - 82	1G10	FUEL INJECTION PUMP HOUSING CONNECTORS (ND) (TH001/HH003)(ESN -499999)	25 - 82
1G14	FUEL CHECK VALVE (6076) (ESN -499999) (ESN -499999).....	25 - 88	2E14	FUEL INJECTION PUMP HOUSING CONNECTORS (ND) (6076HH031) (EARLY DESIGN F.I.P.)	26 - 67
2F1	FUEL FILTER (ESN 500000-) (HH030, HH032, HH034, HH036)	26 - 80	2E7	FUEL LEAK-OFF LINE (6076HH031) (DENSO) (EARLY DESIGN F.I.P.)	26 - 62
2F3	FUEL FILTER (HH031 OR HH035).....	26 - 82	1F20	FUEL LEAK-OFF LINES (HH001, HH004) (EARLY DESIGN ENG)(ESN 165439-499999).....	25 - 66
1G14	FUEL FILTER (6076) (ESN -499999).....	25 - 88	1F18	FUEL LEAK-OFF LINES (HH001, HH004) (EARLY DESIGN ENGINE) (ESN -165438)	25 - 64
2F1	FUEL FILTER LINES (ESN 500000-) (HH030, HH032, HH034, HH036)	26 - 80	1F24	FUEL LEAK-OFF LINES (HH003) (ESN 165439-499999)	25 - 70
2F3	FUEL FILTER LINES (HH031 OR HH035).....	26 - 82	2D23	FUEL LEAK-OFF LINES (HH030, HH032, HH034, HH036)	26 - 56
1G14	FUEL FILTER LINES (6076) (ESN -499999).....	25 - 88	1F22	FUEL INJECTION LINES (TH001, HH003) (EARLY DESIGN ENG)(ESN -165438)	25 - 68
2F19	FUEL GAUGE	30 - 4	2D21	FUEL INJECTION LINES (6076HH031, HH035)	26 - 54
1F20	FUEL INJECTION LINES (HH001, HH004) (EARLY DESIGN ENG)(ESN 165439-499999).....	25 - 66	2E20	FUEL INJECTION NOZZLE (DENSO) (ESN 538146-) (6076HH031, HH035).....	26 - 74
1F18	FUEL INJECTION LINES (HH001, HH004) (EARLY DESIGN ENGINE) (ESN -165438)	25 - 64	1G12	FUEL INJECTION NOZZLE (NIPPONDENSO) (ESN -499999).....	25 - 84
1F24	FUEL INJECTION LINES (HH003) (ESN 165439-499999)	25 - 70	2E23	FUEL INJECTION NOZZLE (NIPPONDENSO) (6076HH030, HH032, HH034, OR HH036)	26 - 78
2D23	FUEL INJECTION LINES (HH030, HH032, HH034, HH036)	26 - 56	1G11	FUEL INJECTION NOZZLE (RB) (6076TH001 OR HH003) (EARLY DESIGN ENGINE)	25 - 83
1F22	FUEL INJECTION LINES (TH001, HH003) (EARLY DESIGN ENG)(ESN -165438)	25 - 68	2E19	FUEL INJECTION NOZZLE (ROBERT BOSCH) (6076HH031) (ESN 500000-538145)	26 - 72
2D21	FUEL INJECTION LINES (6076HH031, HH035)	26 - 54	2E22	FUEL INJECTION NOZZLE (STANADYNE) (6076HH031)	26 - 76
2E20	FUEL INJECTION NOZZLE (DENSO) (ESN 538146-) (6076HH031, HH035).....	26 - 74	2D21	FUEL INJECTION NOZZLE (6076HH031, HH035)	26 - 54
1G12	FUEL INJECTION NOZZLE (NIPPONDENSO) (ESN -499999).....	25 - 84	1F20	FUEL INJECTION NOZZLES (HH001, HH004) (EARLY DESIGN ENG)(ESN 165439-499999).....	25 - 66
2E23	FUEL INJECTION NOZZLE (NIPPONDENSO) (6076HH030, HH032, HH034, OR HH036)	26 - 78	1F18	FUEL INJECTION NOZZLES (HH001, HH004) (EARLY DESIGN ENGINE) (ESN -165438)	25 - 64
1G11	FUEL INJECTION NOZZLE (RB) (6076TH001 OR HH003) (EARLY DESIGN ENGINE)	25 - 83	1F24	FUEL INJECTION NOZZLES (HH003) (ESN 165439-499999)	25 - 70
2E19	FUEL INJECTION NOZZLE (ROBERT BOSCH) (6076HH031) (ESN 500000-538145)	26 - 72	2D23	FUEL INJECTION NOZZLES (HH030, HH032, HH034, HH036)	26 - 56
2E22	FUEL INJECTION NOZZLE (STANADYNE) (6076HH031)	26 - 76	1F22	FUEL INJECTION NOZZLES (TH001, HH003) (EARLY DESIGN ENG)(ESN -165438)	25 - 68
2D21	FUEL INJECTION NOZZLE (6076HH031, HH035)	26 - 54	1G1	FUEL INJECTION PUMP (HH001) (EARLY DESIGN ENGINE).....	25 - 72
1F20	FUEL INJECTION NOZZLES (HH001, HH004) (EARLY DESIGN ENG)(ESN 165439-499999).....	25 - 66	1G5	FUEL INJECTION PUMP (HH003) (LATE DESIGN STD. HP ENGINE) (ESN 149284-499999).....	25 - 76
1F18	FUEL INJECTION NOZZLES (HH001, HH004) (EARLY DESIGN ENGINE) (ESN -165438)	25 - 64	2E3	FUEL INJECTION PUMP (ROBERT BOSCH) (6076HH030)	26 - 60
1F24	FUEL INJECTION NOZZLES (HH003) (ESN 165439-499999)	25 - 70	2E5	FUEL INJECTION PUMP (ROBERT BOSCH) (6076HH034)	26 - 61A
2D23	FUEL INJECTION NOZZLES (HH030, HH032, HH034, HH036)	26 - 56	1G3	FUEL INJECTION PUMP (TH001) (EARLY DESIGN STD. HP ENGINE).....	25 - 74
1F22	FUEL INJECTION NOZZLES (TH001, HH003) (EARLY DESIGN ENG)(ESN -165438)	25 - 68	2E1	FUEL INJECTION PUMP (6076HH030) (EARLY DESIGN)	26 - 58
1G1	FUEL INJECTION PUMP (HH001) (EARLY DESIGN ENGINE).....	25 - 72	2E7	FUEL INJECTION PUMP (6076HH031) (DENSO) (EARLY DESIGN F.I.P.)	26 - 62
			2E9	FUEL INJECTION PUMP (6076HH031) (ROBERT BOSCH) (LATE DESIGN F.I.P.)	26 - 64
			2E11	FUEL INJECTION PUMP (6076HH035) (ROBERT BOSCH) (LATE DESIGN F.I.P.)	26 - 65A
			2E15	FUEL INJECTION PUMP HOUSING CONNECTOR (RB)(HH031ORHH035)(LATE DESIGN F.I.P.)	26 - 68
			1G9	FUEL INJECTION PUMP HOUSING CONNECTOR (ROBERT BOSCH) (6076HH001/HH004).....	25 - 81
			1F17	FUEL INJECTION PUMP HOUSING CONNECTOR (6076) (ROBERT BOSCH) (EARLY DESIGN)	25 - 63
			2E13	FUEL INJECTION PUMP HOUSING CONNECTOR (6076HH030, HH032, HH034, HH036)	26 - 66
			1G10	FUEL INJECTION PUMP HOUSING CONNECTORS (ND) (TH001/HH003)(ESN -499999)	25 - 82
			2E14	FUEL INJECTION PUMP HOUSING CONNECTORS (ND) (6076HH031) (EARLY DESIGN F.I.P.)	26 - 67
			2E7	FUEL LEAK-OFF LINE (6076HH031) (DENSO) (EARLY DESIGN F.I.P.)	26 - 62
			1F20	FUEL LEAK-OFF LINES (HH001, HH004) (EARLY DESIGN ENG)(ESN 165439-499999).....	25 - 66
			1F18	FUEL LEAK-OFF LINES (HH001, HH004) (EARLY DESIGN ENGINE) (ESN -165438)	25 - 64
			1F24	FUEL LEAK-OFF LINES (HH003) (ESN 165439-499999)	25 - 70
			2D23	FUEL LEAK-OFF LINES (HH030, HH032, HH034, HH036)	26 - 56
			2E3	FUEL LEAK-OFF LINES (ROBERT BOSCH) (6076HH030)	26 - 60
			2E5	FUEL LEAK-OFF LINES (ROBERT BOSCH) (6076HH034)	26 - 61A
			1F22	FUEL LEAK-OFF LINES (TH001, HH003) (EARLY DESIGN ENG)(ESN -165438)	25 - 68
			2E1	FUEL LEAK-OFF LINES (6076HH030) (EARLY DESIGN)	26 - 58
			2E9	FUEL LEAK-OFF LINES (6076HH031) (ROBERT BOSCH) (LATE DESIGN F.I.P.)	26 - 64
			2D21	FUEL LEAK-OFF LINES (6076HH031, HH035)	26 - 54
			2E11	FUEL LEAK-OFF LINES (6076HH035) (ROBERT BOSCH) (LATE DESIGN F.I.P.)	26 - 65A
			2F19	FUEL PUMP, AND SENDER.....	30 - 4
			2F19	FUEL SENDER	30 - 4
			2E1	FUEL SHUT-OFF SOLENOID HOUSING (6076HH030) (EARLY DESIGN)	26 - 58
			2F17	FUEL TANK, SUPPORTS, AND FITTINGS	30 - 2
			2E17	FUEL TRANSFER PUMP (DENSO) (ESN 500000-538145) (6076HH031)	26 - 70
			2E16	FUEL TRANSFER PUMP (RB) (ESN 5000000-) (6076HH030, HH032, HH034, HH036)	26 - 69
			2E18	FUEL TRANSFER PUMP (ROBERT BOSCH) (ESN 538146-) (6076HH031, HH035)	26 - 71
			1G7	FUEL TRANSFER PUMP (ROBERT BOSCH) (HH001/HH004) (ESN -499999)	25 - 79
			1G8	FUEL TRANSFER PUMP (TH001, HH003) (ND) (ESN -499999)	25 - 80

ALPHABETICAL INDEX - CONTINUED

GRID	PAGE	GRID	PAGE
G			
1G18	GASKET KIT, CYLINDER HEAD (ESN -499999).....	25	92
2F7	GASKET KIT, CYLINDER HEAD (ESN 500000-).....	26	86
1G18	GASKET KIT, ENGINE REBUILD (ESN -499999).....	25	92
2F7	GASKET KIT, ENGINE REBUILD (ESN 500000-).....	26	86
1G18	GASKET KIT, SHORT BLOCK (ESN -499999).....	25	92
2F7	GASKET KIT, SHORT BLOCK (ESN 500000-).....	26	86
1E10	GASKET, CYLINDER HEAD (ESN -499999).....	25	30
2C20	GASKET, CYLINDER HEAD(ESN 500000-).....	26	24
1F16	GASKET, EXHAUST MANIFOLD	25	62
2D19	GASKET, EXHAUST MANIFOLD	26	52
2D13	GASKET, INTAKE MANIFOLD	26	45
2D14	GASKET, INTAKE MANIFOLD	26	46
1F9	GASKET, INTAKE MANIFOLD (ESN -499999).....	25	54
2D4	GASKET, OIL COOLER (ESN 500000-)	26	34
2D4	GASKET, OIL FILTER HOUSING (ESN 500000-).....	26	34
1E24	GASKET, OIL PAN	25	45
2D6	GASKET, OIL PAN	26	36
1E2	GASKET, REAR OIL SEAL	25	21
2C15	GASKET, REAR OIL SEAL (6076)	26	18
1E12	GASKET, ROCKER ARM COVER	25	32
2C23	GASKET, ROCKER ARM COVER (6076)	26	27
2C17	GASKET, TIMING GEAR COVER (ESN 500000-).....	26	20
1E5	GASKET, TIMING GEAR COVER (TH001,HH001,HH004)(ESN -499999)	25	25
1E4	GASKET, TIMING GEAR COVER (HH003) (EARLY DESIGN)	25	24
1F12	GASKET, TURBOCHARGER	25	58
2D15	GASKET, TURBOCHARGER	26	48
1F7	GASKET, WATER MANIFOLD (EARLY DESIGN ENGINE) (TH001,HH001,HH004)	25	52
2D10	GASKET, WATER MANIFOLD (ESN 500000-).....	26	42
1F8	GASKET, WATER MANIFOLD (HH003) (ESN -499999).....	25	53
1F1	GASKET, WATER PUMP (EARLY DESIGN) (ESN -499999).....	25	46
2D7	GASKET, WATER PUMP (ESN 500000-)	26	38
3B22	GAUGE BOARD, WIRING HARNESS	40	2
6F22	GEAR BOX, REVERSER.....	110	4
8D1	GEAR CASE, DUAL-RANGE CYLINDER DRIVE.....	121	32
9D3	GEAR CASE, VERTICAL AUGER LOWER	130	36
1E6	GEAR, CAMSHAFT (ESN -499999)(W/R86565 GEAR)(TH001, HH001, HH004)	25	26
2C18	GEAR, CAMSHAFT (ESN 500000-)	26	21
4C23	GEAR, DIFFERENTIAL	50	28
4C17	GEAR, FINAL DRIVE	50	22
4E16	GEAR, FINAL DRIVE PINION SHAFT	50	70
4E18	GEAR, FINAL DRIVE PINION SHAFT	50	72
2E1	GEAR, FUEL INJECTION PUMP (6076HH030) (EARLY DESIGN)	26	58
2E7	GEAR, FUEL INJECTION PUMP (6076HH031) (ND) (EARLY DESIGN F.I.P.)	26	62
1G5	GEAR, INJ PUMP (HH003) (LATE DESIGN STD. HP ENGINE) (ESN 149284-499999).....	25	76
1G1	GEAR, INJECTION PUMP (HH001) (EARLY DESIGN ENGINE).....	25	72
2E3	GEAR, INJECTION PUMP (ROBERT BOSCH) (6076HH030)	26	60
2E5	GEAR, INJECTION PUMP (ROBERT BOSCH) (6076HH034)	26	61A
1G3	GEAR, INJECTION PUMP (TH001) (EARLY DESIGN STD. HP ENGINE).....	25	74
2E9	GEAR, INJECTION PUMP (6076HH031) (ROBERT BOSCH) (LATE DESIGN F.I.P.)	26	64
2E11	GEAR, INJECTION PUMP (6076HH035) (ROBERT BOSCH) (LATE DESIGN F.I.P.)	26	65A
1E7	GEAR, INJECTION PUMP DRIVE (6076HH003).....	25	27
2C13	GEAR, OIL PUMP DRIVE (ESN 500000-).....	26	16
1D24	GEAR, OIL PUMP DRIVE (HH001 OR HH004) (ESN -499999)(MKD RE53201)	25	18
1D25	GEAR, OIL PUMP DRIVE (HH003) (LATE DESIGN).....	25	19
1D24	GEAR, OIL PUMP DRIVE (TH001 - EARLY DESIGN) (STD HP)(MKD RE53201)	25	18
2D1	GEAR, OIL PUMP DRIVE(ESN 500000-).....	26	30
1E3	GEAR, STARTER.....	25	22
2C16	GEAR, STARTER.....	26	19
4C19	GEAR, TRANSMISSION	50	24
4C21	GEAR, TRANSMISSION PINION	50	26
5C13	GEARBOX FITTINGS AND HOSES, OIL COOLER, FEEDER HOUSE.....	70	18
8D15	GEARCASE DRIVE, STRAW WALKER	121	46
9C12	GEARCASE, CLEAN GRAIN ELEVATOR	130	20
8C7	GEARCASE, DRIVE SHAFT AND PRIMARY COUNTERSHAFT	121	14
8B24	GEARCASE, ENGINE	121	6
8C1	GEARCASE, ENGINE	121	8
8C3	GEARCASE, ENGINE	121	10
8C5	GEARCASE, ENGINE	121	12
9D13	GEARCASE, HORIZONTAL UNLOADING AUGER DRIVE	130	46
8C9	GEARCASE, PRIMARY COUNTERSHAFT (-640300)	121	16
8C13	GEARCASE, PRIMARY COUNTERSHAFT (-640300)	121	20
8C11	GEARCASE, PRIMARY COUNTERSHAFT (640301-)	121	18
8C15	GEARCASE, PRIMARY COUNTERSHAFT (640301-)	121	22
4C13	GEARSHIFT LEVER AND LINKAGE	50	18
6D4	GEARSHIFT LEVER AND LINKAGE	90	36
6C5	GLASS, CAB AND DOOR	90	12
6E5	GLOVE BOX AND ARM REST, R.H.	90	62
2E7	GOVERNOR, ELECTRONIC INJECTION PUMP (6076HH031) (ND) (EARLY DESIGN F.I.P.)	26	62
9C24	GRAIN TANK AND CURTAINS.....	130	32
9C22	GRAIN TANK BASE.....	130	30
9D22	GRAIN TANK CROSS AUGERS.....	130	54
3E13	GRAIN TANK DUAL LEVEL MONITOR HARNESS.....	40	70
9D1	GRAIN TANK EXTENSIONS.....	130	34
7E7	GRAIN TANK LEAK KIT	120	62
3E11	GRAIN TANK LEVEL MONITOR.....	40	68
3E11	GRAIN TANK LIGHT	40	68
3F7	GRAIN TANK LIGHTS	40	88
9C20	GRAIN TANK TOP.....	130	28
3E11	GRAIN TANK UNLOADING AUGER LIMIT SWITCH	40	68
5F7	GRAIN TANK UNLOADING DRIVE CYLINDER.....	70	90
5F7	GRAIN TANK UNLOADING DRIVE CYLINDER MOUNTING	70	90
9D5	GRAIN TANK VERTICAL UNLOADING AUGER	130	38
9D5	GRAIN TANK VERTICAL UNLOADING AUGER HOUSING.....	130	38

ALPHABETICAL INDEX - CONTINUED

GRID		PAGE	GRID		PAGE
3E11	GRAIN TANK WIRING HARNESS, LIGHT, LIMIT SWITCH AND LEVEL MONITOR	40 - 68	6F16	HEADER HEIGHT CONTROL GAUGE, LH CAB POST (EXPORT ONLY)	90 - 100
7C15	GRATE AND RASP BAR CONCAVE	120 - 22	9E11	HEADER HEIGHT CONTROL, DIAL-A-MATIC HYDRAULIC LINE AND VALVE BLOCK	160 - 2
7C17	GRATE AND RASP BAR CONCAVE	120 - 24	5D11	HEADER HEIGHT CONTROL, DIAL-A-MATIC, VALVE BLOCK SOLENOID	70 - 41
7C13	GRATE CURTAIN, BEATER (652179-)	120 - 20	9E13	HEADER HEIGHT CONTROL, ELECTRIC HARNESS, DIAL-A-MATIC	160 - 4
7D3	GRATE, FINGER, SPIKE-TOOTH	120 - 34	5D9	HEADER LIFT CYLINDER, HYDRAULIC	70 - 39
8G7	GUARD AND STRAW SPREADER MOUNTING	125 - 14	5D8	HEADER LIFT HYDRAULIC CYLINDER	70 - 38
6H5	GUIDES, TIGHTENER AND FEEDER CONVEYOR DRIVE CHAIN	110 - 38	5D10	HEADER LIFT HYDRAULIC CYLINDER KIT	70 - 40
6I3	GUIDES, TIGHTENER AND FEEDER CONVEYOR DRIVE CHAIN-RETROFIT INSTALLATION	110 - 58	5D3	HEADER LIFT LINES AND HOSES	70 - 32
	H		5E6	HEADER LIFT MODULE, SOLENOID VALVE	70 - 62
5D14	HALF GALLON DUAL ACCUMULATOR	70 - 44	4B21	HEADER LIFT/LOWER SWITCH	50 - 2
6C23	HAND RAIL, R.H.	90 - 30	3G16	HEADER LIGHTS, (EXPORT ONLY)	40 - 122
6C3	HANDLE, CAB DOOR	90 - 10	1A10	HEADERS	10 - 9
8G15	HANDLE, CHAFF SPREADER FRAME	125 - 22	3G18	HEADLIGHT UNDER CAB, (EXPORT ONLY)	40 - 124
7B22	HANDLE, CYLINDER DOOR	120 - 4	1F16	HEAT SHIELD	25 - 62
8G17	HANDLES AND SHIELDS, CHAFF SPREADER (DUAL MOTOR) (650301-)	125 - 24	6E20	HEATER & AIR CONDITIONING AND PRESSURIZING FAN	90 - 78
6C11	HANDRAILS, OPERATOR'S PIVOTING PLATFORM	90 - 18	3C23	HEATER AND AIR CONDITIONER SWITCH	40 - 30
5G20	HANDRAILS, REAR LADDER LANDING	80 - 6	6D1	HEATER AND AIR CONDITIONING DUCTS	90 - 33
6F14	HARDWARE KIT, CAB	90 - 98	6E18	HEATER AND AIR CONDITIONING HOUSING AND FILTERS	90 - 76
6F5	HARDWARE KIT, COMPRESSOR (-650300) R-12	90 - 88	3C15	HEATER AND AIR CONDITONER (WIRING HARNESS) (-660300)	40 - 22
3G2	HARNESS CONNECTORS, LOWER, FOR 6076 ENGINE	40 - 108	1F6	HEATER RETURN ELBOW (EARLY DESIGN) (ESN -499999)	25 - 51
3G4	HARNESS CONNECTORS, UPPER (6076 ENGINE)	40 - 110	6F12	HEATER SYSTEM	90 - 96
3D15	HARNESS FOR REAR LIGHTS AND SHIELDS	40 - 48	3C15	HEATER WIRING HARNESS (-660300)	40 - 22
3D11	HARNESS WIRING, MAIN, L.H. CENTER	40 - 44	3C17	HEATER WIRING HARNESS (660301-)	40 - 24
3E5	HARNESS, LOWER, ENGINE, 6076	40 - 62	1C11	HEATER, COOLANT, ENGINE BLOCK	20 - 18
3E7	HARNESS, LOWER, ENGINE, 6076	40 - 64	2D12	HEATER, ENGINE COOLANT	26 - 44
3E3	HARNESS, UPPER, ENGINE, 6076	40 - 60	6D17	HEIGHT ADJUSTER, CAB SEAT	90 - 50
1G1	HARNESS, WIRING (HH001) (EARLY DESIGN ENGINE)	25 - 72	3G20	HEIGHT SENSOR, STUBBLE, (EXPORT ONLY)	40 - 126
2E3	HARNESS, WIRING (ROBERT BOSCH) (6076HH030)	26 - 60	4C4	HIGH FLOATATION DRIVE WHEELS PLANETARY FINAL DRIVE	50 - 9
2E5	HARNESS, WIRING (ROBERT BOSCH) (6076HH034)	26 - 61A	6E24	HIGH PRESSURE SWITCH, AIR CONDITIONER (-650300) R-12	90 - 82
1G3	HARNESS, WIRING (TH001) (EARLY DESIGN) (EARLY DESIGN STD. HP ENGINE)	25 - 74	6F1	HIGH PRESSURE SWITCH, AIR CONDITIONER (650301-) R134A	90 - 84
2E1	HARNESS, WIRING (6076HH030) (EARLY DESIGN)	26 - 58	9B19	HINGED DOOR, LOWER AUGER, CLEAN GRAIN	130 - 2
2E7	HARNESS, WIRING (6076HH031) (DENSO) (EARLY DESIGN F.I.P.)	26 - 62	3F5	HOLDDOWN, BATTERY	40 - 86
2E9	HARNESS, WIRING (6076HH031) (ROBERT BOSCH) (LATE DESIGN F.I.P.)	26 - 64	3F3	HOLDDOWN, BATTERY-FRENCH	40 - 84
2E11	HARNESS, WIRING (6076HH035) (ROBERT BOSCH) (LATE DESIGN F.I.P.)	26 - 65A	6E13	HOLDER, CUP (660301-)	90 - 70
3C17	HARNESS, WIRING, A/C, HEATER AND AIRSEAT (660301-)	40 - 24	5H17	HOOD, REAR	80 - 28
3D13	HARNESS, WIRING, MAIN, L.H. CENTER	40 - 46	9D18	HORIZONTAL UNLOADING AUGER	130 - 50
3D7	HARNESS, WIRING, MAIN, L.H. FRONT	40 - 40	9D11	HORIZONTAL UNLOADING AUGER HUB SUPPORT	130 - 44
3D17	HARNESS, WIRING, R.H. MAIN	40 - 50	9D13	HORIZONTAL UNLOADING AUGER DRIVE GEARCASE	130 - 46
3C13	HARNESS, WIRING, STEERING COLUMN (645905-)	40 - 20	9D14	HORIZONTAL UNLOADING AUGER HOUSING	130 - 48
3C1	HARVESTRAK GAUGE	40 - 6	9D16	HORIZONTAL UNLOADING AUGER HOUSING (EXPORT)	130 - 49A
6D2	HARVESTRAK GAUGE	90 - 34	9D7	HORIZONTAL UNLOADING AUGER SWIVEL	130 - 40
3E1	HARVESTRAK MONITOR WIRING HARNESS	40 - 58	4H11	HORN BUTTON	60 - 24
1E10	HEAD BOLT KIT (ESN -499999)	25 - 30	6E14	HORN BUTTON	90 - 72
2C20	HEAD BOLT KIT (ESN 500000-)	26 - 24	4F21	HOSES AND LINES, FOUR WHEEL DRIVE, L.H. (655301-)	50 - 100
1E10	HEAD, CYLINDER (ESN -499999)	25 - 30	5D3	HOSES AND LINES, HEADER LIFT	70 - 32
2C20	HEAD, CYLINDER (ESN 500000-)	26 - 24	5E1	HOSES AND LINES, HYDRAULIC, CYLINDER SPEED	70 - 56
9E19	HEADER BELTS	170 - 4	4F13	HOSES AND LINES, HYDRO. OIL COOLER (-640300)	50 - 92
8C17	HEADER ELECTROMAGNETIC CLUTCH	121 - 24	4F17	HOSES AND LINES, HYDRO. OIL COOLER (665301-)	50 - 96

ALPHABETICAL INDEX - CONTINUED

GRID	PAGE	GRID	PAGE
4F15	HOSES AND LINES, OIL COOLER, HYDROSTATIC (640301-665300)	2E15	HOUSING CONNECTORS, FUEL INJECTION PUMP (RB)(HH031ORHH035)(LATE DESIGN F.I.P.)
	50 - 94		26 - 68
5F23	HOSES AND LINES, OIL COOLER, WET CLUTCH (640301-665300)	1G9	HOUSING CONNECTORS, FUEL INJECTION PUMP (ROBERT BOSCH) (6076HH001/HH004).....
	70 - 106		25 - 81
4E22	HOSES AND LINES, OIL, HYDROSTATIC DRIVE, LOWER (4 WHEEL DRIVE)(655301-)	1F17	HOUSING CONNECTORS, FUEL INJECTION PUMP (6076) (ROBERT BOSCH) (EARLY DESIGN)
	50 - 76		25 - 63
5C15	HOSES AND LINES, REEL DRIVE, HYD., FRONT.....	2E13	HOUSING CONNECTORS, FUEL INJECTION PUMP (6076HH030, HH032, HH034, HH036)
	70 - 20		26 - 66
5B23	HOSES AND LINES, REEL DRIVE, HYDRAULIC, L.H.....	4C18	HOUSING COVER, TRANSMISSION AND DIFFERENTIAL
	70 - 4		50 - 23
5C19	HOSES AND LINES, REEL LIFT	6E18	HOUSING, AIR CONDITIONER & HEATER
	70 - 24		90 - 76
4H15	HOSES AND LINES, STEERING, FRONT	6C25	HOUSING, CAB AIR FILTER
	60 - 28		90 - 32
4H21	HOSES AND LINES, STEERING, REAR	9D5	HOUSING, CHARGE, VERTICAL UNLOADING AUGER.....
	60 - 34		130 - 38
5F5	HOSES AND LINES, UNLOADING AUGER SWING HYDRAULIC CYLINDER	4C16	HOUSING, FINAL DRIVE
	70 - 88		50 - 21
5F21	HOSES AND LINES, WET CLUTCH OIL COOLER, HYDRAULIC (-650300)	2E1	HOUSING, FUEL SHUT-OFF SOLENOID (EARLY DESIGN)
	70 - 104		26 - 58
5G1	HOSES AND LINES, WET CLUTCH OIL COOLER, HYDRAULIC (665301-)	6E18	HOUSING, HEATER/AIR CONDITIONING
	70 - 108		90 - 76
2G9	HOSES AND RADIATOR	9D14	HOUSING, HORIZONTAL UNLOADING AUGER.....
	30 - 18		130 - 48
6E24	HOSES, AIR CONDITIONER (-650300) R-12	9D16	HOUSING, HORIZONTAL UNLOADING AUGER (EXPORT)
	90 - 82		130 - 49A
6F1	HOSES, AIR CONDITIONER (650301-) R134A	4D5	HOUSING, HYDROSTATIC PUMP
	90 - 84		50 - 34
5G11	HOSES, CHARGE PRESSURE (640301-)	4D19	HOUSING, HYDROSTATIC PUMP
	70 - 118		50 - 48
5F7	HOSES, GRAIN TANK UNLOADING DRIVE CYLINDER	2D4	HOUSING, OIL COOLER AND FILTER (ESN 500000-).....
	70 - 90		26 - 34
6F12	HOSES, HEATER	1E22	HOUSING, OIL FILTER (EARLY DESIGN) (ESN -499999).....
	90 - 96		25 - 42
5D5	HOSES, HYDRAULIC, CONTOUR MASTER (L.H.) (OPTIONAL) (660301-)	4E15	HOUSING, OUTER, FINAL DRIVE
	70 - 34		50 - 69
5C17	HOSES, HYDRAULIC, REEL PUMP.....	1E2	HOUSING, REAR OIL SEAL.....
	70 - 22		25 - 21
5C7	HOSES, HYDRAULIC, VARIABLE DRIVE, FEEDER HOUSE.....	2C15	HOUSING, REAR OIL SEAL (6076)
	70 - 12		26 - 18
8H7	HOSES, LINES AND MOTOR, CHAFF SPREADER (-650300)	4I9	HOUSING, SPINDLE, REAR AXLE
	125 - 38		60 - 46
8H9	HOSES, LINES AND MOTOR, CHAFF SPREADER (650301-)	1H3	HOUSING, STARTER DRIVE (ND) (NO. 028000-3292) (6076)(EARLY DESIGN).....
	125 - 40		25 - 103
4H17	HOSES, LINES, STEERING, L.H. SIDE	8H21	HOUSING, TAILINGS ELEVATOR
	60 - 30		125 - 52
8I16	HOSES, LUBE, L. H.	2D10	HOUSING, THERMOSTAT, FRONT (ESN 500000-).....
	125 - 72		26 - 42
8I14	HOSES, LUBE, R. H.....	1F7	HOUSING, THERMOSTAT, FRONT (EARLY DESIGN ENGINE) (TH001,HH001,HH004)
	125 - 70		25 - 52
4E20	HOSES, OIL, HYDROSTATIC DRIVE, LOWER (-655300)	1F8	HOUSING, THERMOSTAT, FRONT (HH003) (ESN -499999).....
	50 - 74		25 - 53
4E24	HOSES, OIL, HYDROSTATIC DRIVE, LOWER (-655300)	4C10	HOUSING, TRANSMISSION AND DIFFERENTIAL
	50 - 78		50 - 15
4F1	HOSES, OIL, HYDROSTATIC DRIVE, LOWER (FOUR WHEEL DRIVE) (655301-).....	2D18	HOUSING, TURBOCHARGER CENTER (AIRESEARCH)
	50 - 80		26 - 51
4F3	HOSES, OIL, HYDROSTATIC DRIVE, LOWER (TWO WHEEL DRIVE) (655000-).....	1F14	HOUSING, TURBOCHARGER CENTER (AIRESEARCH) (ESN -499999)
	50 - 82		25 - 60
4F9	HOSES, OIL, HYDROSTATIC DRIVE, UPPER	2D17	HOUSING, TURBOCHARGER CENTER (SCHWITZER)
	50 - 88		26 - 50
4F11	HOSES, OIL, HYDROSTATIC DRIVE, UPPER (655301-)	1F15	HOUSING, TURBOCHARGER CENTER (SCHWITZER) (ESN -499999).....
	50 - 90		25 - 61
5D23	HOSES, PRESSURE, HYDRAULIC	8I4	HOUSING, UPPER TAILINGS AUGER
	70 - 54		125 - 60
4H9	HOSES, STEERING, UPPER	1F6	HOUSING, WATER PUMP INLET (EARLY DESIGN) (ESN -499999)
	60 - 22		25 - 51
5F19	HOSES, TILT CYLINDER - CONTOUR MASTER (660301-)	5D8	HYDRAULIC CYLINDER, HEADER LIFT
	70 - 102		70 - 38
5D20	HOSES, UPPER RETURN, HYDRAULIC.....	5F9	HYDRAULIC CYLINDER, UNLOADING AUGER SWING (-650300)
	70 - 50		70 - 92
4F23	HOSES, 4-WHEEL DRIVE.....	5F11	HYDRAULIC CYLINDER, UNLOADING AUGER SWING (650301-657573)
	50 - 102		70 - 94
8F22	HOUSING AND KNIFEBANK, STRAW CHOPPER (-655300)	5D7	HYDRAULIC FILTER, MAIN
	125 - 4		70 - 36
8F24	HOUSING AND KNIFEBANK, STRAW CHOPPER (-655300)	5C21	HYDRAULIC FITTINGS, FEEDER HOUSE, EXPORT ...
	125 - 6		70 - 26
8F15	HOUSING AND KNIFEBANK, STRAW CHOPPER (655301-)	5C7	HYDRAULIC HOSE, VARIABLE DRIVE, FEEDER HOUSE.....
	121 - 94		70 - 12
8G1	HOUSING AND KNIFEBANK, STRAW CHOPPER (655301-)	5D5	HYDRAULIC HOSES, CONTOUR MASTER (L.H.) (OPTIONAL) (660301-)
	125 - 8		70 - 34
7D13	HOUSING AND SHOE GRAIN SUPPLY AUGERS	5C17	HYDRAULIC HOSES, REEL PUMP
	120 - 44		70 - 22
7D15	HOUSING AND SHOE GRAIN SUPPLY AUGERS	5E1	HYDRAULIC LINES AND HOSES, CYLINDER SPEED
	120 - 46		70 - 56
		5D3	HYDRAULIC LINES AND HOSES, HEADER LIFT
			70 - 32

ALPHABETICAL INDEX - CONTINUED

GRID		PAGE	GRID		PAGE
4F21	HYDRAULIC LINES AND HOSES, L.H., FOUR WHEEL DRIVE (655301-)	50 - 100	4D17	HYDROSTATIC DRIVE PUMP COVER	50 - 46
5C23	HYDRAULIC LINES AND HOSES, REEL FORE-AND-AFT, FRONT	70 - 28	4D3	HYDROSTATIC DRIVE PUMP SHAFT	50 - 32
5F21	HYDRAULIC LINES AND HOSES, WET CLUTCH OIL COOLER (-640300)	70 - 104	4D17	HYDROSTATIC DRIVE PUMP SHAFT	50 - 46
5G1	HYDRAULIC LINES AND HOSES, WET CLUTCH OIL COOLER (665301-)	70 - 108	4F15	HYDROSTATIC OIL COOLER LINES AND HOSES (640301-665300)	50 - 94
4F19	HYDRAULIC LINES AND HOSES, 4-WHEEL DRIVE L.H. SIDE (-655300)	50 - 98	5D22	HYDROSTATIC/HYDRAULIC RESERVOIR	70 - 52
4F25	HYDRAULIC LINES, CASE DRAIN, 4-WHEEL DRIVE	50 - 104	I		
5D1	HYDRAULIC LINES, REEL FORE-AND-AFT, L.H.	70 - 30	1B19	IDLER ARMS, ROTARY SCREEN DRIVE (645301-)	20 - 2
5F9	HYDRAULIC MOUNTING, UNLOADING AUGER SWING (-650300)	70 - 92	9C14	IDLER, DRIVE, CLEAN GRAIN ELEVATOR	130 - 22
5F11	HYDRAULIC MOUNTING, UNLOADING AUGER SWING (650301-657573)	70 - 94	6H4	IDLER, FEEDER CONVEYOR	110 - 37
5F13	HYDRAULIC MOUNTING, UNLOADING AUGER SWING (657574-)	70 - 96	4H11	IGNITION SWITCH	60 - 24
3E3	HYDRAULIC OIL TEMP. SWITCH, 6076	40 - 60	6E14	IGNITION SWITCH	90 - 72
5D23	HYDRAULIC PRESSURE LINES AND HOSES	70 - 54	1F1	IMPELLER, WATER PUMP (EARLY DESIGN) (ESN -499999)	25 - 46
5F1	HYDRAULIC PUMP FEEDER HOUSE / REEL DRIVE ..	70 - 84	2D7	IMPELLER, WATER PUMP (ESN 500000-)	26 - 38
5F1	HYDRAULIC PUMP REEL / FEEDER HOUSE DRIVE ..	70 - 84	7D5	INDICATOR CABLE AND BRACKETS, CONCAVE	120 - 36
5E24	HYDRAULIC PUMP, MAIN	70 - 82	7D7	INDICATOR, CONCAVE, CORN AND SMALL GRAIN ..	120 - 38
5D18	HYDRAULIC RETURN LINES	70 - 48	2E20	INJECTION NOZZLE, FUEL (DENSO) (ESN 538146-) (6076HH031, HH035)	26 - 74
5D20	HYDRAULIC RETURN LINES, UPPER	70 - 50	1G12	INJECTION NOZZLE, FUEL (NIPPONDENSO) (ESN -499999)	25 - 84
5D22	HYDRAULIC/HYDROSTATIC OIL RESERVOIR	70 - 52	2E23	INJECTION NOZZLE, FUEL (NIPPONDENSO) (6076HH030, HH032, HH034, OR HH036)	26 - 78
4B21	HYDRO LEVER ASSEMBLY	50 - 2	1G11	INJECTION NOZZLE, FUEL (RB) (6076TH001 OR HH003) (EARLY DESIGN ENGINE)	25 - 83
4D9	HYDRO. DR. DISPLACEMENT CONTROL VALVE	50 - 38	2E19	INJECTION NOZZLE, FUEL (ROBERT BOSCH) (6076HH031) (ESN 500000-538145)	26 - 72
4F13	HYDRO. OIL COOLER LINES AND HOSES (-640300)	50 - 92	2E22	INJECTION NOZZLE, FUEL (STANADYNE) (6076HH031)	26 - 76
4F17	HYDRO. OIL COOLER LINES AND HOSES (665301-)	50 - 96	2C17	INJECTION PUMP ACCESS COVER (ESN 500000-)	26 - 20
4D7	HYDROSTATIC DRIVE CHARGE PUMP	50 - 36	1E5	INJECTION PUMP ACCESS COVER (TH001,HH001,HH004)(ESN -499999)	25 - 25
4D8	HYDROSTATIC DRIVE CHARGE PUMP	50 - 37	1E4	INJECTION PUMP ACCESS COVER (HH003) (EARLY DESIGN)	25 - 24
4D14	HYDROSTATIC DRIVE CHARGE PUMP (PLANETARY)	50 - 43	1E7	INJECTION PUMP DRIVE GEAR (6076HH003)	25 - 27
4D15	HYDROSTATIC DRIVE CHARGE PUMP (PLANETARY)	50 - 44	2E7	INJECTION PUMP ELECTRONIC GOVERNOR (6076HH031) (ND) (EARLY DESIGN F.I.P.)	26 - 62
4B23	HYDROSTATIC DRIVE CONTROL CABLES (-645300)	50 - 4	2E3	INJECTION PUMP GEAR (ROBERT BOSCH) (6076HH030)	26 - 60
4C1	HYDROSTATIC DRIVE CONTROL CABLES (645301-)	50 - 6	2E5	INJECTION PUMP GEAR (ROBERT BOSCH) (6076HH034)	26 - 61A
4B21	HYDROSTATIC DRIVE LEVER AND CABLE	50 - 2	2E9	INJECTION PUMP GEAR (6076HH031) (ROBERT BOSCH) (LATE DESIGN F.I.P.)	26 - 64
4D11	HYDROSTATIC DRIVE MOTOR	50 - 40	2E11	INJECTION PUMP GEAR (6076HH035) (ROBERT BOSCH) (LATE DESIGN F.I.P.)	26 - 65A
4D21	HYDROSTATIC DRIVE MOTOR	50 - 50	1G1	INJECTION PUMP GEARS (HH001) (EARLY DESIGN ENGINE)	25 - 72
4G4	HYDROSTATIC DRIVE MOTOR	50 - 108	1G5	INJECTION PUMP GEARS (HH003)(LATE DESIGN STD. HP ENGINE) (ESN 149284-499999)	25 - 76
4F9	HYDROSTATIC DRIVE OIL HOSES, UPPER	50 - 88	1G3	INJECTION PUMP GEARS (TH001) (EARLY DESIGN STD. HP ENGINE)	25 - 74
4F11	HYDROSTATIC DRIVE OIL HOSES, UPPER (655301-)	50 - 90	2E1	INJECTION PUMP LUBE LINE (6076HH030) (EARLY DESIGN)	26 - 58
4E20	HYDROSTATIC DRIVE OIL LINES AND HOSES, LOWER (-655300)	50 - 74	2E3	INJECTION PUMP LUBE LINE (6076HH030) (ROBERT BOSCH)	26 - 60
4E24	HYDROSTATIC DRIVE OIL LINES AND HOSES, LOWER (-655300)	50 - 78	2E5	INJECTION PUMP LUBE LINE (6076HH034) (ROBERT BOSCH)	26 - 61A
4F1	HYDROSTATIC DRIVE OIL LINES AND HOSES, LOWER (FOUR WHEEL DRIVE)(655301-)	50 - 80	1G1	INJECTION PUMP LUBE LINE (HH001) (EARLY DESIGN ENGINE)	25 - 72
4F5	HYDROSTATIC DRIVE OIL LINES AND HOSES, LOWER (FRANCE)	50 - 84	1G3	INJECTION PUMP LUBE LINE (TH001) (EARLY DESIGN STD. HP ENGINE)	25 - 74
4F7	HYDROSTATIC DRIVE OIL LINES AND HOSES, LOWER (FRANCE)	50 - 86			
4F3	HYDROSTATIC DRIVE OIL LINES AND HOSES, LOWER (TWO WHEEL DRIVE)(655000-)	50 - 82			
4E22	HYDROSTATIC DRIVE OIL LINES AND HOSES, LOWER (4 WHEEL DRIVE)(655301-)	50 - 76			
4G6	HYDROSTATIC DRIVE PUMP - MAIN HYDRAULIC PUMP CONNECTING HARDWARE	50 - 110			
4D3	HYDROSTATIC DRIVE PUMP COVER	50 - 32			

ALPHABETICAL INDEX - CONTINUED

GRID	PAGE	GRID	PAGE
2E7	INJECTION PUMP LUBE LINE (6076HH031) (DENSO) (EARLY DESIGN F.I.P.)		26 - 62
2E9	INJECTION PUMP LUBE LINE (6076HH031) (RB) (LATE DESIGN F.I.P.)		26 - 64
2E11	INJECTION PUMP LUBE LINE (6076HH035) (RB) (LATE DESIGN F.I.P.)		26 - 65A
1G1	INJECTION PUMP, ELECTRONIC FUEL (HH001) (EARLY DESIGN ENGINE)		25 - 72
2E3	INJECTION PUMP, ELECTRONIC FUEL (6076HH030) (ROBERT BOSCH).....		26 - 60
2E1	INJECTION PUMP, ELECTRONIC FUEL (6076HH030)(EARLY DESIGN).....		26 - 58
2E5	INJECTION PUMP, ELECTRONIC FUEL (6076HH034) (ROBERT BOSCH).....		26 - 61A
2E9	INJECTION PUMP,ELECTRONIC FUEL (6076HH031) (RB)(LATE DESIGN F.I.P.).....		26 - 64
2E11	INJECTION PUMP,ELECTRONIC FUEL (6076HH035)(RB)(LATE DESIGN F.I.P.)		26 - 65A
3E9	INLET AIR TEMPERATURE SWITCH		40 - 66
4E1	INNER COVER.....		50 - 54
4E18	INNER HOUSING, FINAL DRIVE		50 - 72
4C19	INPUT SHAFT, TRANSMISSION		50 - 24
1E10	INSERTS, VALVE SEAT (ESN -499999)		25 - 30
2C20	INSERTS, VALVE SEAT (ESN 500000-)		26 - 24
3C1	INSTRUMENT PANEL, CAB POST		40 - 6
6D2	INSTRUMENT PANEL, CAB POST		90 - 34
6F16	INSTRUMENT PANEL, CAB POST LH (EXPORT ONLY)		90 - 100
2D13	INTAKE MANIFOLD (EARLY DESIGN)		26 - 45
1F9	INTAKE MANIFOLD (ESN -499999).....		25 - 54
2D14	INTAKE MANIFOLD (LATE DESIGN).....		26 - 46
1F11	INTAKE MANIFOLD ADAPTER (ESN 147639-165935)		25 - 56
1F9	INTAKE MANIFOLD COUPLING (ESN -499999).....		25 - 54
2D14	INTAKE MANIFOLD GASKET.....		26 - 46
2D13	INTAKE MANIFOLD GASKETS.....		26 - 45
1F9	INTAKE MANIFOLD GASKETS (ESN -499999).....		25 - 54
6I1	INTAKE SHIELD.....		110 - 56
7D19	INTAKE SHIELDS, CLEANING FAN.....		120 - 50
7D21	INTAKE SHIELDS, CLEANING FAN.....		120 - 52
2G3	INTAKE TUBES AND AIR CLEANER (-645300)		30 - 12
2G5	INTAKE TUBES AND AIR CLEANER (645301-)		30 - 14
1E10	INTAKE VALVES (ESN -499999)		25 - 30
2C20	INTAKE VALVES (ESN 500000-)		26 - 24
2D3	INTAKE, ENGINE OIL PUMP		26 - 32
1E18	INTAKE, ENGINE OIL PUMP (REPLACEMENT) (USED WITH RE44118 OR RE60622).....		25 - 38
1C5	INTERCOOLER		20 - 12
8D7	INTERMEDIATE SHAFT MOUNTING, CYLINDER DRIVE, DUAL-RANGE.....		121 - 38
8D9	INTERMEDIATE SHEAVE, CYLINDER DRIVE, DUAL-RANGE		121 - 40
J			
1D12	JETS, PISTON COOLING		25 - 6
1D10	JETS, PISTON COOLING (EARLY DESIGN) (WITHOUT HEAD BOLTS)		25 - 4
2C1	JETS, PISTON COOLING (ESN 500000-)		26 - 4
K			
8F17	KEY STOCK, METRIC KIT		121 - 96
2C13	KEY, DAMPER.....		26 - 16
1D20	KIT(S), ENGINE OVERHAUL (ESN -499999)		25 - 14
2C9	KIT(S), ENGINE OVERHAUL (ESN 500000-)		26 - 12
2C9	KIT(S), EXPANDED ENGINE OVERHAUL (ESN 500000-).....		26 - 12
3C21	KIT, AIR CONDITIONER PRESSURIZER FAN (640301-650300)		40 - 28
6D21	KIT, AIR SUSPENSION SEAT (665301-)		90 - 54
6D23	KIT, AIR SUSPENSION SEAT (665301-)		90 - 56
6E1	KIT, AIR SUSPENSION SEAT (665301-)		90 - 58
6E3	KIT, AIR SUSPENSION SEAT (665301-)		90 - 60
5E4	KIT, ARMATURE, SOLENOID CONTROL VALVE, RELIEF VALVE MODULE.....		70 - 59
6F5	KIT, COMPRESSOR HARDWARE (-650300) R-12		90 - 88
3F19	KIT, ELECTRICAL CONNECTOR SERVICE		40 - 100
3F21	KIT, ELECTRICAL CONNECTOR SERVICE		40 - 102
7E7	KIT, GRAIN TANK LEAK.....		120 - 62
1E10	KIT, HEAD BOLT (ESN -499999).....		25 - 30
2C20	KIT, HEAD BOLT (ESN 500000-).....		26 - 24
5E6	KIT, HEADER LIFT CONTROL VALVE REPAIR		70 - 62
5D10	KIT, HEADER LIFT HYDRAULIC CYLINDER		70 - 40
4D11	KIT, HYDROSTATIC DRIVE MOTOR.....		50 - 40
4D21	KIT, HYDROSTATIC DRIVE MOTOR.....		50 - 50
6G20	KIT, LOCKOUT ADAPTER - CONTOUR MASTER (BELT PU & 4R CORN HEADS)(660301-)		110 - 28
8F17	KIT, METRIC KEY STOCK		121 - 96
1D23	KIT, PISTON LINER (ESN -499999)		25 - 17
2C12	KIT, PISTON/LINER (6076) (ESN 500000-).....		26 - 15
5C1	KIT, REEL DRIVE FLOW CONTROL REPAIR.....		70 - 6
5F3	KIT, REEL HYDRAULIC PUMP SEAL		70 - 86
5E8	KIT, REEL LIFT/VARIABLE AND CYLINDER SPEED		70 - 64
6D14	KIT, RETROFIT SEAT BELT (MACHINES PRIOR TO 1996 MODEL YEAR)		90 - 46
5E5	KIT, SEAL, SOLENOID CONTROL VALVE, RELIEF VALVE MODULE.....		70 - 60
1H1	KIT, STARTER SOLENOID COVER (EARLY DESIGN)		25 - 101
4H24	KIT, STEERING CYLINDER		60 - 37
7F5	KIT, STRAW WALKER BEARING (650301-665300)		120 - 82
7F7	KIT, STRAW WALKER BEARING (665301-)		120 - 84
3F23	KIT, TERMINAL AND WIRING		40 - 104
3C19	KIT, THERMOSTAT, AIR CONDITIONER (630301-640300)		40 - 26
1D22	KIT, UNDERHAUL ENGINE (STD BEARINGS)		25 - 16
2C11	KIT, UNDERHAUL ENGINE (STD BRGS) (6076)		26 - 14
5F15	KIT, UNLOADING AUGER SWING HYDRAULIC CYLINDER		70 - 98
2D9	KIT, WATER PUMP REPAIR (ESN 500000-).....		26 - 40
1F3	KIT, WATER PUMP REPAIR (EARLY DESIGN) (ESN -499999).....		25 - 48
1D20	KITS, EXPANDED ENGINE OVERHAUL (ESN -499999)		25 - 14
8F22	KNIFEBANK AND HOUSING, STRAW CHOPPER (-655300)		125 - 4
8F24	KNIFEBANK AND HOUSING, STRAW CHOPPER (-655300)		125 - 6
8F15	KNIFEBANK AND HOUSING, STRAW CHOPPER (655301-)		121 - 94

ALPHABETICAL INDEX - CONTINUED

GRID		PAGE	GRID		PAGE
8G1	KNIFEBANK AND HOUSING, STRAW CHOPPER (655301-)	125 - 8	3C5	LIGHTING, AUXILIARY FIELD	40 - 10
8H1	KNOB, CHAFF SPREADER CONTROL	125 - 32	3C4	LIGHTS, FRONT AND REAR TAIL AND TURN	40 - 9
L			3E11	LIMIT SWITCH, GRAIN TANK UNLOADING AUGER	40 - 68
3D9	L H MAIN WIRING HARNESS, L H FRONT	40 - 42	2E7	LINE, FUEL LEAK-OFF (6076HH031) (DENSO) (EARLY DESIGN F.I.P.)	26 - 62
3D15	L.H. AND R.H. MAIN WIRING HARNESS, L.H. AND R.H. REAR	40 - 48	1G5	LINE, INJ PUMP LUBE (HH003) (LATE DESIGN STD. HP ENGINE) (ESN 149284-499999)	25 - 76
3B22	L.H. AND R.H. RADIO SPEAKERS, WIRING HARNESS	40 - 2	2E1	LINE, INJECTION PUMP LUBE (6076HH030) (EARLY DESIGN)	26 - 58
3D11	L.H. MAIN WIRING HARNESS, L.H. CENTER	40 - 44	2E3	LINE, INJECTION PUMP LUBE (6076HH030) (ROBERT BOSCH)	26 - 60
3D7	L.H. MAIN WIRING HARNESS, L.H. FRONT	40 - 40	2E5	LINE, INJECTION PUMP LUBE (6076HH034) (ROBERT BOSCH)	26 - 61A
5I3	L.H. SERVICE ACCESS SHIELD	80 - 38	1G1	LINE, INJECTION PUMP LUBE (HH001) (EARLY DESIGN ENGINE)	25 - 72
4H17	L.H. SIDE HOSES AND LINES, STEERING	60 - 30	1G3	LINE, INJECTION PUMP LUBE (TH001) (EARLY DESIGN STD. HP ENGINE)	25 - 74
6C15	LADDER AND LATCH, OPERATOR'S PLATFORM	90 - 22	2E7	LINE, INJECTION PUMP LUBE (6076HH031) (DENSO) (EARLY DESIGN F.I.P.)	26 - 62
6C13	LADDER, OPERATOR'S PLATFORM	90 - 20	2E9	LINE, INJECTION PUMP LUBE (6076HH031) (RB) (LATE DESIGN F.I.P.)	26 - 64
5H11	LADDER, REAR	80 - 22	2E11	LINE, INJECTION PUMP LUBE (6076HH035) (RB) (LATE DESIGN F.I.P.)	26 - 65A
3H5	LAMP ASSEMBLY, REAR - L.H. SIDE	40 - 136	1D23	LINERS, CYLINDER	25 - 17
6C11	LANDING, OPERATOR'S PLATFORM	90 - 18	2C12	LINERS, CYLINDER (6076)	26 - 15
6C13	LANDING, OPERATOR'S PLATFORM	90 - 20	8H3	LINES AND FITTING, CHAFF SPREADER	125 - 34
6C23	LANDING, R.H.	90 - 30	4F21	LINES AND HOSES, FOUR WHEEL DRIVE HYDRAULIC, L.H. (655301-)	50 - 100
5H11	LANDING, REAR LADDER	80 - 22	5D3	LINES AND HOSES, HEADER LIFT	70 - 32
6C15	LATCH AND LADDER, OPERATOR'S PLATFORM	90 - 22	5E1	LINES AND HOSES, HYDRAULIC, CYLINDER SPEED	70 - 56
5H13	LATCH ARM, REAR LADDER LANDING (-640300)	80 - 24	4F19	LINES AND HOSES, HYDRAULIC, 4-WHEEL DRIVE, L.H. SIDE (-655300)	50 - 98
5H15	LATCH ARM, REAR LADDER LANDING (640301-)	80 - 26	4F13	LINES AND HOSES, HYDRO. OIL COOLER (-640300)	50 - 92
6H7	LATCH HANDLE, FEED PLATE	110 - 40	4F17	LINES AND HOSES, HYDRO. OIL COOLER (665301-)	50 - 96
6C3	LATCH, CAB DOOR	90 - 10	4F15	LINES AND HOSES, OIL COOLER, HYDROSTATIC (640301-665300)	50 - 94
9D3	LATCH, GRAIN TANK CLEAN OUT CHUTE	130 - 36	5F23	LINES AND HOSES, OIL COOLER, WET CLUTCH (640301-665300)	70 - 106
6C13	LATCH, OPERATOR'S PLATFORM	90 - 20	4E22	LINES AND HOSES, OIL, HYDROSTATIC DRIVE, LOWER (4 WHEEL DRIVE)(655301-)	50 - 76
7D17	LEAF SCREENS, CLEANING FAN (CORN) (660985-)	120 - 48	5C15	LINES AND HOSES, REEL DRIVE, HYD., FRONT	70 - 20
7E7	LEAK KIT, GRAIN TANK	120 - 62	5B23	LINES AND HOSES, REEL DRIVE, HYDRAULIC, L.H.	70 - 4
5I13	LEFT SIDE FRONT SHIELD ASSEMBLY	80 - 48	5C19	LINES AND HOSES, REEL LIFT	70 - 24
5I17	LEFT SIDE SHIELD ASSEMBLY	80 - 52	4H15	LINES AND HOSES, STEERING, FRONT	60 - 28
6E11	LEFT-HAND ARMREST	90 - 68	4H21	LINES AND HOSES, STEERING, REAR	60 - 34
6C21	LEFT-HAND LANDING AND MIRROR	90 - 28	5F5	LINES AND HOSES, UNLOADING AUGER SWING HYDRAULIC CYLINDER	70 - 88
6C19	LEFT-HAND LANDING AND MIRROR (-650300)	90 - 26	5F21	LINES AND HOSES, WET CLUTCH OIL COOLER, HYDRAULIC (-650300)	70 - 104
3E13	LEVEL MONITOR WIRING HARNESS, DUAL	40 - 70	5G1	LINES AND HOSES, WET CLUTCH OIL COOLER, HYDRAULIC (665301-)	70 - 108
3E13	LEVEL MONITOR, DUAL	40 - 70	4F23	LINES AND HOSES, 4-WHEEL DRIVE	50 - 102
3E11	LEVEL MONITOR, GRAIN TANK	40 - 68	4G23	LINES, BRAKE, RESERVOIR, MASTER CYLINDER	60 - 12
4B21	LEVER ASSEMBLY, GEARSHIFT	50 - 2	2F1	LINES, FUEL FILTER (ESN 50000-) (HH030, HH032, HH034, HH036)	26 - 80
6D15	LEVER, ADJUSTER, OPERATOR'S SEAT	90 - 48	2F3	LINES, FUEL FILTER (HH031 OR HH035)	26 - 82
4C13	LEVER, GEARSHIFT	50 - 18	1G14	LINES, FUEL FILTER (6076) (ESN -499999)	25 - 88
6D4	LEVER, GEARSHIFT	90 - 36	1F18	LINES, FUEL INJECTION (HH001, HH004) (EARLY DESIGN ENGINE) (ESN -165438)	25 - 64
5D9	LIFT CYLINDER, HEADER, HYDRAULIC	70 - 39	1F20	LINES, FUEL INJECTION (HH001, HH004) (EARLY DESIGN ENG)(ESN 165439-499999)	25 - 66
1E13	LIFT STRAPS, ENGINE	25 - 33			
2C24	LIFT STRAPS, ENGINE (6076)	26 - 28			
5D10	LIFT, HEADER, HYDRAULIC CYLINDER KIT	70 - 40			
3G14	LIGHT REAR (EXPORT ONLY)	40 - 120			
3B22	LIGHT SWITCH, CAB, WIRING HARNESS	40 - 2			
3F6	LIGHT SWITCH, SHOE ADJUSTING	40 - 87			
3G18	LIGHT UNDER CAB, (EXPORT ONLY)	40 - 124			
3B21	LIGHT, CAB DOME	40 - 1			
3C3	LIGHT, CAB ROOF	40 - 8			
3H1	LIGHT, FIELD (660301-)	40 - 132			
3E11	LIGHT, GRAIN TANK	40 - 68			
3G16	LIGHT, HEADER, (EXPORT ONLY)	40 - 122			
3F7	LIGHT, ROW	40 - 88			
3G24	LIGHT, TRANSPORT WARNING	40 - 130			
3E13	LIGHT, UNLOADING AUGER	40 - 70			
3G12	LIGHT, REVOLVING BEACON (EXPORT ONLY)	40 - 118			
3C9	LIGHTER, CIGARETTE	40 - 14			

ALPHABETICAL INDEX - CONTINUED

GRID	PAGE	GRID	PAGE		
1F24	LINES, FUEL INJECTION (HH003) (ESN 165439-499999).....	25 - 70	6G18	LOCKOUT ASSEMBLY - CONTOUR MASTER (OPTIONAL) (660301-).....	110 - 26
2D23	LINES, FUEL INJECTION (HH030, HH032, HH034, HH036).....	26 - 56	3D11	LOGIC MODULE	40 - 44
1F22	LINES, FUEL INJECTION (TH001, HH003) (EARLY DESIGN ENG)(ESN -165438)	25 - 68	3D13	LOGIC MODULE	40 - 46
2D21	LINES, FUEL INJECTION (6076HH031, HHO35)	26 - 54	2C3	LONGBLOCK, "COMPLETE BLOCK ASSEMBLY" (ESN 500000-).....	26 - 6
1F20	LINES, FUEL LEAK-OFF (HH001, HH004) (EARLY DESIGN ENG)(ESN 165439-499999).....	25 - 66	3D23	LOW SHAFT SPEED SENSORS AND BRACKETS	40 - 56
1F18	LINES, FUEL LEAK-OFF (HH001, HH004) (EARLY DESIGN ENGINE) (ESN -165438)	25 - 64	9B19	LOWER AUGER, CLEAN GRAIN	130 - 2
1F24	LINES, FUEL LEAK-OFF (HH003) (ESN 165439-499999).....	25 - 70	9B21	LOWER ELEVATOR, CLEAN GRAIN	130 - 4
2D23	LINES, FUEL LEAK-OFF (HH030, HH032, HH034, HH036)	26 - 56	9B23	LOWER ELEVATOR, CLEAN GRAIN	130 - 6
2E3	LINES, FUEL LEAK-OFF (ROBERT BOSCH) (6076HH030)	26 - 60	3E5	LOWER HARNESS FOR 6076 ENGINE	40 - 62
2E5	LINES, FUEL LEAK-OFF (ROBERT BOSCH) (6076HH034)	26 - 61A	3E7	LOWER HARNESS FOR 6076 ENGINE	40 - 64
1F22	LINES, FUEL LEAK-OFF (TH001, HH003) (EARLY DESIGN ENG)(ESN -165438)	25 - 68	4E20	LOWER HYDROSTATIC DRIVE OIL LINES AND HOSES (-655300)	50 - 74
2E1	LINES, FUEL LEAK-OFF (6076HH030) (EARLY DESIGN)	26 - 58	4E24	LOWER HYDROSTATIC DRIVE OIL LINES AND HOSES (-655300)	50 - 78
2E9	LINES, FUEL LEAK-OFF (6076HH031) (ROBERT BOSCH) (LATE DESIGN F.I.P.)	26 - 64	4F1	LOWER HYDROSTATIC DRIVE OIL LINES AND HOSES (FOUR WHEEL DRIVE)(65301-)	50 - 80
2D21	LINES, FUEL LEAK-OFF (6076HH031, HH035)	26 - 54	4F3	LOWER HYDROSTATIC DRIVE OIL LINES AND HOSES (TWO WHEEL DRIVE)(65000-)	50 - 82
2E11	LINES, FUEL LEAK-OFF (6076HH035) (ROBERT BOSCH) (LATE DESIGN F.I.P.)	26 - 65A	4E22	LOWER HYDROSTATIC DRIVE OIL LINES AND HOSES (4 WHEEL DRIVE)(655301-)	50 - 76
4H17	LINES, HOSES, STEERING, L.H. SIDE	60 - 30	8H17	LOWER TAILINGS AUGER.....	125 - 48
8H5	LINES, HOSES, VALVE AND PUMP, CHAFF SPREADER	125 - 36	9E20	LOWER TAILINGS AUGER BELT	170 - 5
5C17	LINES, HYDRAULIC, REEL PUMP.....	70 - 22	8H25	LOWER TAILINGS AUGER CHAIN TIGHTENER	125 - 56
4E20	LINES, OIL, HYDROSTATIC DRIVE, LOWER (-655300)	50 - 74	8I2	LOWER TAILINGS AUGER DRIVE TIGHTENER	125 - 58
4E24	LINES, OIL, HYDROSTATIC DRIVE, LOWER (-655300)	50 - 78	8H17	LOWER TAILINGS AUGER SHAFT	125 - 48
4F1	LINES, OIL, HYDROSTATIC DRIVE, LOWER (FOUR WHEEL DRIVE) (655301-).....	50 - 80	8H17	LOWER TAILINGS AUGER SHAFT TIGHTENER	125 - 48
4F3	LINES, OIL, HYDROSTATIC DRIVE, LOWER (TWO WHEEL DRIVE) (655000-).....	50 - 82	8H19	LOWER TAILINGS AUGER TROUGH	125 - 50
4G15	LINES, PARKING BRAKE (-640300).....	60 - 4	8H24	LOWER TROUGH SUPPORT.....	125 - 55
5D23	LINES, PRESSURE, HYDRAULIC	70 - 54	9E8	LUBE BANK, UNLOADING AUGER LOWER.....	130 - 66
5D18	LINES, RETURN, HYDRAULIC.....	70 - 48	9E6	LUBE BANK, UNLOADING AUGER UPPER	130 - 64
4H19	LINES, STEERING R.H. SIDE	60 - 32	8I16	LUBE HOSES L. H.	125 - 72
2F21	LINES, TANK FUEL	30 - 6	8I14	LUBE HOSES R. H.....	125 - 70
2D15	LINES, TURBOCHARGER OIL (ESN 500000-).....	26 - 48	5C9	LUBE OIL PUMP, FEEDER HOUSE OIL COOLER.....	70 - 14
1F12	LINES, TURBOCHARGER OIL (EARLY DESIGN) (ESN -499999).....	25 - 58	4C19	LUBE PUMP, TRANSMISSION.....	50 - 24
5D20	LINES, UPPER RETURN, HYDRAULIC	70 - 50	1D9	LUBRICANT, ELECTRICAL CONNECTOR, ENGINE	25 - 2
4C13	LINKAGE, GEARSHIFT	50 - 18	2B24	LUBRICANT, ELECTRICAL CONNECTOR, ENGINE	26 - 3
6D4	LINKAGE, GEARSHIFT	90 - 36	1D9	LUBRICANT, VALVE STEM	25 - 2
8E9	LINKAGE, SHEAVE, FAN DRIVE SPEED CONTROL....	121 - 64	2B24	LUBRICANT, VALVE STEM	26 - 3
8E3	LINKAGE, SPEED CONTROL, FAN DRIVE (-640300)	121 - 58	M		
8E5	LINKAGE, SPEED CONTROL, FAN DRIVE (640301-655300)	121 - 60	1H5	MAGNETIC PICK-UP (EARLY DESIGN)	25 - 105
8E7	LINKAGE, SPEED CONTROL, FAN DRIVE (655301-).....	121 - 62	2F14	MAGNETIC PICK-UP (ESN-XXXXXX)	26 - 93
9C9	LOADING AUGER, CLEAN GRAIN	130 - 16	1E1	MAIN BEARING	25 - 20
9C11	LOADING AUGER, CLEAN GRAIN, FOLD (660301-)	130 - 18	1D12	MAIN BEARING CAPS	25 - 6
6E7	LOCKING LEVER, ARMREST, R.H. (-640300)	90 - 64	2C1	MAIN BEARING CAPS (ESN 500000-)	26 - 4
6G20	LOCKOUT ADAPTER KIT - CONTOUR MASTER (BELT PU & 4R CORN HEADS)(660301-)	110 - 28	2C14	MAIN BEARINGS (6076).....	26 - 17
8D3	LOCKOUT ARM, DUAL-RANGE	121 - 34	5G16	MAIN FRAME, SEPARATOR	80 - 2
			1H2	MAIN FRAME, STARTER (ND) (NO. 028000-3292) (6076)(EARLY DESIGN).....	25 - 102
			4G6	MAIN HYDRAULIC PUMP - HYDROSTATIC DRIVE PUMP CONNECTING HARDWARE	50 - 110
			9E12	MAIN VALVE BLOCK SOLENOID DIAL-A-MATIC HEADER HEIGHT CONTROL	160 - 3
			3D13	MAIN WIRING HARNESS,L.H. CENTER	40 - 46
			4E4	MANIFOLD AND PACKINGS	50 - 57
			1F16	MANIFOLD, EXHAUST	25 - 62
			2D19	MANIFOLD, EXHAUST	26 - 52
			2D13	MANIFOLD, INTAKE (EARLY DESIGN)	26 - 45
			1F9	MANIFOLD, INTAKE (ESN -499999)	25 - 54
			2D14	MANIFOLD, INTAKE (LATE DESIGN)	26 - 46
			1F11	MANIFOLD, INTAKE ADAPTER (ESN 147639-165935).....	25 - 56

ALPHABETICAL INDEX - CONTINUED

GRID		PAGE	GRID		PAGE
1F7	MANIFOLD, WATER, FRONT (EARLY DESIGN ENGINE) (TH001,HH001,HH004)	25 - 52	2G7	MUFFLER AND EXHAUST PIPE	30 - 16
2D10	MANIFOLD, WATER, FRONT (ESN 500000-)	26 - 42		N	
1F8	MANIFOLD, WATER, FRONT (HH003) (ESN -499999).....	25 - 53	6E5	NEUTRAL START SWITCH	90 - 62
4H1	MASTER BRAKE CYLINDER	60 - 14	5G18	NO. 1 UPRIGHT KIT	80 - 4
4G23	MASTER CYLINDER, RESERVOIR, BRAKE LINES	60 - 12	5G19	NO. 5 UPRIGHT KIT	80 - 5
8F17	METRIC KEY STOCK KIT.....	121 - 96	2E20	NOZZLE, FUEL INJECTION (DENSO) (ESN 538146-) (6076HH031, HH035).....	26 - 74
6C21	MIRROR, LEFT-HAND REAR VIEW.....	90 - 28	1F20	NOZZLE, FUEL INJECTION (HH001, HH004) (EARLY DESIGN ENG)(ESN 165439-499999).....	25 - 66
6C19	MIRROR, LEFT-HAND REAR VIEW (-650300)	90 - 26	1F18	NOZZLE, FUEL INJECTION (HH001, HH004) (EARLY DESIGN ENGINE) (ESN -165438)	25 - 64
6C23	MIRROR, R.H.	90 - 30	1F24	NOZZLE, FUEL INJECTION (HH003) (ESN 165439-499999)	25 - 70
3F15	MODULE, CENTRAL ELECTRONICS AND CIRCUIT BOARDS	40 - 96	2D23	NOZZLE, FUEL INJECTION (HH030, HH032, HH034, HH036)	26 - 56
3D11	MODULE, LOGIC.....	40 - 44	1G12	NOZZLE, FUEL INJECTION (NIPPONDENSO) (ESN -499999).....	25 - 84
3D13	MODULE, LOGIC.....	40 - 46	2E23	NOZZLE, FUEL INJECTION (NIPPONDENSO) (6076HH030, HH032, HH034, OR HH036)	26 - 78
5E22	MODULE, SIX STACK SOLENOID CONTROL VALVE ASSEMBLY & MOUNTINGS (660301-)	70 - 80	1G11	NOZZLE, FUEL INJECTION (RB) (6076TH001 OR HH003) (EARLY DESIGN ENGINE)	25 - 83
3E1	MONITOR WIRING HARNESS, HARVESTRAK.....	40 - 58	2E19	NOZZLE, FUEL INJECTION (ROBERT BOSCH) (6076HH031) (ESN 500000-538145)	26 - 72
3E11	MONITOR, LEVEL, GRAIN TANK.....	40 - 68	2E22	NOZZLE, FUEL INJECTION (STANADYNE) (6076HH031)	26 - 76
8G13	MOTOR AND DISC, CHAFF SPREADER (650301-)	125 - 20	1F22	NOZZLE, FUEL INJECTION (TH001, HH003) (EARLY DESIGN ENG)(ESN -165438)	25 - 68
4G4	MOTOR DRIVE, HYDROSTATIC	50 - 108	2D21	NOZZLE, FUEL INJECTION (6076HH031, HH035)	26 - 54
3F1	MOTOR, ADJUSTING, CONCAVE	40 - 82		O	
3E15	MOTOR, ADJUSTING, SEPARATOR FAN DRIVE	40 - 72	5G9	O-RINGS, HYDRAULIC, FLAT	70 - 116
4E3	MOTOR, CAM LOBE (STEERABLE MOTOR)	50 - 56	1D23	O-RINGS, LINER	25 - 17
4D11	MOTOR, HYDROSTATIC DRIVE	50 - 40	2C12	O-RINGS, LINER (6076)	26 - 15
4D21	MOTOR, HYDROSTATIC DRIVE	50 - 50	1D9	OFF-SEASON STORAGE KIT.....	25 - 2
4G4	MOTOR, HYDROSTATIC DRIVE	50 - 108	2B24	OFF-SEASON STORAGE KIT.....	26 - 3
4D13	MOTOR, HYDROSTATIC VALVE	50 - 42	5G3	OIL COOLER AND AIR CONDITIONING CONDENSER FOR 9600 253 HP	70 - 110
4D16	MOTOR, HYDROSTATIC VALVE	50 - 45	1E20	OIL COOLER BYPASS VALVE (ESN -156313).....	25 - 40
5C5	MOTOR, REEL (EATON) (656147-).....	70 - 10	1E21	OIL COOLER BYPASS VALVE (ESN 156314-499999).....	25 - 41
5C3	MOTOR, REEL (TRW ROSS) (-656146).....	70 - 8	2D4	OIL COOLER GASKET (ESN 500000-)	26 - 34
3G6	MOTOR, REEL SPEED, AND BRACKET.....	40 - 112	4F13	OIL COOLER LINES AND HOSES, HYDRO. (-640300)	50 - 92
2F10	MOTOR, STARTING (DENSO) (12V F4)	26 - 89	4F17	OIL COOLER LINES AND HOSES, HYDRO. (665301-)	50 - 96
1G21	MOTOR, STARTING (ND) (NO. 028000-3292) (ESN -136850).....	25 - 95	4F15	OIL COOLER LINES AND HOSES, HYDROSTATIC (640301-665300)	50 - 94
1G22	MOTOR, STARTING (ND) (12V F4) (ESN 136851-499999).....	25 - 96	5F23	OIL COOLER LINES AND HOSES, WET CLUTCH (640301-665300)	70 - 106
3E17	MOTOROLA-PRESTOLITE, ALTERNATOR VOLTAGE REGULATOR (90 AMP) (-636603).....	40 - 74	1F5	OIL COOLER, ENGINE (EARLY DESIGN) (ESN -499999).....	25 - 50
5D14	MOUNTING AND DUAL ACCUMULATOR HALF GALLON	70 - 44	5C11	OIL COOLER, FEEDER HOUSE	70 - 16
8G23	MOUNTING SUPPORT, CHAFF SPREADER	125 - 30	1C13	OIL DRAIN, ENGINE CRANKCASE	20 - 20
3E23	MOUNTING, ALTERNATOR	40 - 80	1E4	OIL FILLER CAP (HH003) (EARLY DESIGN)	25 - 24
5F7	MOUNTING, GRAIN TANK UNLOADING DRIVE CYLINDER	70 - 90	1E5	OIL FILLER CAP (TH001, HH001, HH004) (ESN -499999)	25 - 25
5D22	MOUNTING, HYDRAULIC/HYDRO OIL RESERVOIR	70 - 52	5G5	OIL FILTER ASSEMBLY, ENGINE GEARCASE	70 - 112
5D16	MOUNTING, ONE GALLON ACCUMULATOR (655301-)	70 - 46	2D4	OIL FILTER BYPASS VALVE (ESN 500000-)	26 - 34
8G7	MOUNTING, STRAW SPREADER AND GUARD	125 - 14	1E22	OIL FILTER BYPASS VALVE (EARLY DESIGN) (ESN -499999).....	25 - 42
5F9	MOUNTING, UNLOADING AUGER SWING HYDRAULIC (-650300)	70 - 92			
5F11	MOUNTING, UNLOADING AUGER SWING HYDRAULIC (650301-657573)	70 - 94			
5F13	MOUNTING, UNLOADING AUGER SWING HYDRAULIC (657574-)	70 - 96			
5E22	MOUNTINGS, SIX STACK SOLENOID CONTROL VALVE (660301-)	70 - 80			
5E17	MOUNTINGS, SOLENOID CONTROL VAVLE MODULE ASSEMBLY	70 - 74			
5E19	MOUNTINGS, SOLENOID CONTROL VAVLE MODULE ASSEMBLY	70 - 76			
5H21	MUD AND FAN DRIVE SHIELDS, L.H.	80 - 32			
5H19	MUD SHIELD, AUGER DRIVE, R.H.	80 - 30			
5H21	MUD SHIELD, L.H.	80 - 32			
5I11	MUD SHIELD, R.H.	80 - 46			
4G3	MUD SHIELDS.....	50 - 107			

GRID		PAGE	GRID		PAGE
1E22	OIL FILTER HOUSING (EARLY DESIGN) (ESN -499999).....	25 - 42	1D9	OIL, VALVE STEM LUBRICANT	25 - 2
2D4	OIL FILTER HOUSING GASKET (ESN 500000-).....	26 - 34	2B24	OIL, VALVE STEM LUBRICANT	26 - 3
1E22	OIL FILTER, ENGINE (EARLY DESIGN) (ESN -499999).....	25 - 42	5D16	ONE GALLON ACCUMULATOR AND MOUNTING (655301-).....	70 - 46
2D4	OIL FILTER, ENGINE (ESN 500000-)	26 - 34	3C9	OPERATOR'S ARMREST PANEL	40 - 14
4E20	OIL HOSES, HYDROSTATIC DRIVE, LOWER (-655300)	50 - 74	6C7	OPERATOR'S CAB FRAME AND SUPPORT	90 - 14
4E24	OIL HOSES, HYDROSTATIC DRIVE, LOWER (-655300)	50 - 78	3B24	OPERATOR'S OVERHEAD CONSOLE PANEL.....	40 - 4
4F1	OIL HOSES, HYDROSTATIC DRIVE, LOWER (FOUR WHEEL DRIVE) (655301-).....	50 - 80	6C11	OPERATOR'S PIVOTING PLATFORM AND HANDRAIL	90 - 18
4F3	OIL HOSES, HYDROSTATIC DRIVE, LOWER (TWO WHEEL DRIVE) (655000-).....	50 - 82	6C13	OPERATOR'S PLATFORM LADDER AND LATCH	90 - 20
4F9	OIL HOSES, UPPER, HYDROSTATIC DRIVE.....	50 - 88	6C15	OPERATOR'S PLATFORM LADDER AND LATCH	90 - 22
4F11	OIL HOSES, UPPER, HYDROSTATIC DRIVE (655301-)	50 - 90	6C11	OPERATOR'S PLATFORM LANDING	90 - 18
4E22	OIL LINES AND HOSES, HYDROSTATIC DRIVE, LOWER (4 WHEEL DRIVE)(655301-)	50 - 76	6C13	OPERATOR'S PLATFORM LANDING	90 - 20
4E24	OIL LINES HYDROSTATIC DRIVE, LOWER (-655300)	50 - 78	6C13	OPERATOR'S PLATFORM LATCH AND LADDER	90 - 20
4F1	OIL LINES HYDROSTATIC DRIVE, LOWER (FOUR WHEEL DRIVE) (655301-)	50 - 80	6D10	OPERATOR'S SEAT AND BACKREST	90 - 42
4F3	OIL LINES HYDROSTATIC DRIVE, LOWER (TWO WHEEL DRIVE) (655000-)	50 - 82	6D17	OPERATOR'S SEAT HEIGHT ADJUSTER	90 - 50
4E20	OIL LINES, HYDROSTATIC DRIVE, LOWER (-655300)	50 - 74	6D12	OPERATOR'S SEAT SEATBELT (665301-).....	90 - 44
2D15	OIL LINES, TURBOCHARGER (ESN 500000-).....	26 - 48	6D8	OPERATORS SEAT SHROUDS	90 - 40
1F12	OIL LINES, TURBOCHARGER (EARLY DESIGN) (ESN -499999).....	25 - 58	6D8	OPTIONAL SEAT.....	90 - 40
1E24	OIL PAN	25 - 45	4E16	OUTER HOUSING FINAL DRIVE	50 - 70
2D6	OIL PAN	26 - 36	3G8	OUTLET, CONVENIENCE	40 - 114
1E24	OIL PAN DRAIN VALVE	25 - 45	3G10	OUTLET, CONVENIENCE (660301-)	40 - 116
2D6	OIL PAN DRAIN VALVE	26 - 36	3G1	OUTLET, ELECTRICAL SERVICE	40 - 107
1E24	OIL PAN GASKET	25 - 45	1D20	OVERHAUL KIT(S), ENGINE (ESN -499999)	25 - 14
2D6	OIL PAN GASKET	26 - 36	2C9	OVERHAUL KIT(S), ENGINE (ESN 500000-)	26 - 12
2D4	OIL PRESSURE REGULATING VALVE (ESN 500000-).....	26 - 34	3B24	OVERHEAD CONSOLE PANEL	40 - 4
1E22	OIL PRESSURE REGULATING VALVE (EARLY DESIGN) (ESN -499999)	25 - 42	3B22	OVERHEAD CONSOLE, WIRING HARNESS	40 - 2
3E5	OIL PRESSURE SENDING UNIT, ENGINE	40 - 62	P		
3E7	OIL PRESSURE SENDING UNIT, ENGINE	40 - 64	4E4	PACKINGS AND MANIFOLD	50 - 57
2C13	OIL PUMP DRIVE GEAR (ESN 500000-)	26 - 16	8I4	PADDLES, UPPER TAILINGS AUGER	125 - 60
2D1	OIL PUMP DRIVE GEAR (ESN 500000-)	26 - 30	1E24	PAN, OIL	25 - 45
1D24	OIL PUMP DRIVE GEAR (HH001 OR HH004) (ESN -499999)(MKD RE53201)	25 - 18	2D6	PAN, OIL	26 - 36
1D25	OIL PUMP DRIVE GEAR (HH003) (LATE DESIGN).....	25 - 19	7E23	PAN, SHAKER	120 - 76
1D24	OIL PUMP DRIVE GEAR (TH001 - EARLY DESIGN) (STD HP)(MKD RE53201)	25 - 18	3C9	PANEL, ARMREST	40 - 14
2D1	OIL PUMP, ENGINE (ESN 500000-)	26 - 30	3C1	PANEL, INSTRUMENT, CAB POST	40 - 6
1E16	OIL PUMP, ENGINE (LATE DESIGN OIL PUMP) (ESN -499999).....	25 - 36	6D2	PANEL, INSTRUMENT, CAB POST	90 - 34
1E19	OIL PUMP, REPLACEMENT (EARLY DESIGN) (ESN -499999).....	25 - 39	3B24	PANEL, OVERHEAD CONSOLE.....	40 - 4
2C17	OIL SEAL, CRANKSHAFT FRONT (ESN 500000-).....	26 - 20	6B20	PANELS, CAB	90 - 2
1E5	OIL SEAL, CRANKSHAFT FRONT (TH001,HH001,HH004)(ESN -499999)	25 - 25	6C1	PANELS, CAB INTERIOR TRIM	90 - 8
1E4	OIL SEAL, CRANKSHAFT FRONT (HH003) (EARLY DESIGN)	25 - 24	4G13	PARK BRAKE ACTUATOR (-640300).....	60 - 2
1E2	OIL SEAL, REAR	25 - 21	3D11	PARK BRAKE SWITCH.....	40 - 44
2C15	OIL, ENGINE (TORQ-GARD, PLUS-50)	26 - 18	4G15	PARKING BRAKE LINES (-640300)	60 - 4
1D8	OIL, ENGINE (TORQ-GARD, PLUS-50)	26 - 1	4G17	PARKING BRAKE LINES AND HOSES, UPPER (-640300).....	60 - 6
2B23	OIL, ENGINE (TORQ-GARD, PLUS-50)	26 - 1	4G19	PARKING BRAKE PEDAL AND SEAL (640301-).....	60 - 8
			4G12	PARKING BRAKE VALVE (-640300).....	60 - 1
			4G21	PEDAL, BRAKE AND CYLINDERS, MASTER.....	60 - 10
			6D6	PEDAL, REVERSER FOOT CONTROL, FEEDER HOUSE.....	90 - 38
			6F24	PEDAL, REVERSER FOOT CONTROL, FEEDER HOUSE.....	110 - 6
			1H5	PICK-UP, MAGNETIC (EARLY DESIGN)	25 - 105
			2F14	PICK-UP, MAGNETIC (ESN-XXXXXX)	26 - 93
			4E16	PINION SHAFT BEARINGS, FINAL DRIVE	50 - 70
			4E18	PINION SHAFT BEARINGS, FINAL DRIVE	50 - 72
			4E16	PINION SHAFT GEARS, FINAL DRIVE	50 - 70
			4E18	PINION SHAFT GEARS, FINAL DRIVE	50 - 72
			4D1	PINION, FINAL DRIVE.....	50 - 30
			1D12	PISTON COOLING JETS	25 - 6
			1D10	PISTON COOLING JETS (EARLY DESIGN) (WITHOUT HEAD BOLTS)	25 - 4
			2C1	PISTON COOLING JETS (ESN 500000-)	26 - 4
			1D23	PISTON RINGS (ESN -499999)	25 - 17